

BARRINGTON PUBLIC SCHOOLS

DISTRICT REPORT

March 17, 2011

District Report 2010

TESTING

District Report 2010- Testing

Proficient with Distinction (Level 4)

Student's performance demonstrates an ability to read and comprehend grade-appropriate text. Student is able to analyze and interpret literary and informational text. Student offers insightful observations/assertions that are well supported by references to the text. Student uses range of vocabulary strategies and breadth of vocabulary knowledge to read and comprehend a wide variety of texts.

Proficient (Level 3)

Student's performance demonstrates an ability to read and comprehend grade-appropriate text. Student is able to analyze and interpret literary and informational text. Student makes and supports relevant assertions by referencing text. Student uses vocabulary strategies and breadth of vocabulary knowledge to read and comprehend text.

Partially Proficient (Level 2)

Student's performance demonstrates an inconsistent ability to read and comprehend grade-appropriate text. Student attempts to analyze and interpret literary and informational text. Student may make and/or support assertions by referencing text. Student's vocabulary knowledge and use of strategies may be limited and may impact the ability to read and comprehend text.

Substantially Below Proficient (Level 1)

Student's performance demonstrates minimal ability to derive/construct meaning from grade appropriate text. Student may be able to recognize story elements and text features. Student's limited vocabulary knowledge and use of strategies impacts the ability to read and comprehend text.

District Report 2010 - Testing

Grade 3

Reading	Proficient	Level 4	Level 3	Level 2	Level 1
Year 09 – 10	95%	123 students 44%	144 students 51%	13 students 5%	2 students 1%
Year 10-11	93%	88 students 32%	166 students 61%	12 students 4%	7 students 3%

Math	Proficient	Level 4	Level 3	Level 2	Level 1
Year 09 – 10	88%	97 students 38%	129 students 50%	25 students 10%	6 students 2%
Year 10-11	88%	93 students 34%	147 students 54%	25 students 9%	8 students 3%

Grade 4

Reading	Proficient	Level 4	Level 3	Level 2	Level 1
Year 09 – 10	93%	130 students 46%	133 students 47%	16 students 6%	6 students 2%
Year 10-11	90%	111students 42%	128 students 48%	20 students 8%	5 students 2%

Math	Proficient	Level 4	Level 3	Level 2	Level 1
Year 09 – 10	88%	94 students 33%	157 students 55 %	28 students 10%	6 students 2%
Year 10-11	83%	101 students 38%	119 students 45 %	33 students 12%	12 students 5%

District Report 2010 - Testing

Grade 5

Reading	Proficient	Level 4	Level 3	Level 2	Level 1
Year 09 – 10	94%	115 students 47%	115 students 47%	7 students 3%	9 students 4%
Year 10 - 11	94%	150 students 51%	127 students 43%	13 students 4%	3 students 1%

Math	Proficient	Level 4	Level 3	Level 2	Level 1
Year 09 – 10	88%	112 students 41%	117 students 47%	13 students 5%	15 students 6%
Year 10 - 11	90%	126 students 43%	137 students 47%	19 students 6%	11 students 4%

Grade 6

Reading	Proficient	Level 4	Level 3	Level 2	Level 1
Year 09 – 10	90%	76 students 32%	136 students 58%	18 students 8%	5 students 2%
Year 10 – 11	92%	87 students 35%	144 students 57%	12 students 5%	9 students 4%

Math	Proficient	Level 4	Level 3	Level 2	Level 1
Year 09 – 10	90%	133 students 57%	77 students 33%	11 students 5%	14 students 6%
Year 10 – 11	90%	125 students 50%	100 students 40%	16 students 6%	11 students 4%

District Report 2010 - Testing

Grade 7

Reading	Proficient	Level 4	Level 3	Level 2	Level 1
Year 09 – 10	95%	113 students 41%	148 students 54%	11 students 4%	3 students 1%
Year 10 – 11	89%	104 students 44%	107 students 45%	16 students 7%	9 students 4%

Math	Proficient	Level 4	Level 3	Level 2	Level 1
Year 09 – 10	89%	137 students 50%	109 students 39%	19 students 7%	12 students 4%
Year 10 – 11	89%	128 students 54%	83 students 35%	8 students 3%	16 students 7%

Grade 8

Reading	Proficient	Level 4	Level 3	Level 2	Level 1
Year 09 – 10	92%	112 students 42%	135 students 50%	15 students 6%	7 students 3%
Year 10 – 11	91%	136 students 47%	135 students 47%	17 students 6%	1students <1%

Math	Proficient	Level 4	Level 3	Level 2	Level 1
Year 09 – 10	89%	142 students 53%	96 students 36%	20 students 7%	11 students 4%
Year 10 – 11	87%	142 students 49%	111 students 38%	24 students 8%	12 students 4%

District Report 2010 - Testing

Grade 11

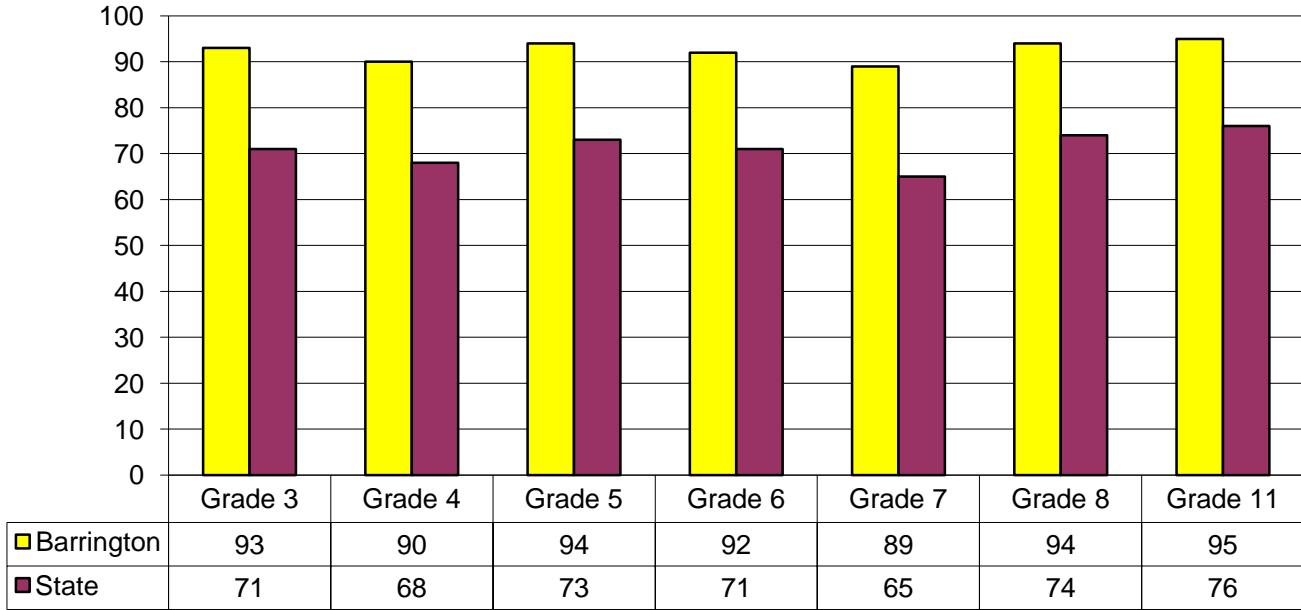
Reading	Proficient	Level 4	Level 3	Level 2	Level 1
Year 09 – 10	95%	174 students 59%	108 students 36%	9 students 3%	6 students 2%
Year 10 – 11	95%	193 students 65%	90 students 30%	12 students 4%	4 students 1%

Math	Proficient	Level 4	Level 3	Level 2	Level 1
Year 09 – 10	66%	29 students 10%	166 students 56%	65 students 22%	37 students 12%
Year 10 – 11	73%	46 students 15%	174 students 58%	51 students 17%	29 students 10%

Writing	Proficient	Level 4	Level 3	Level 2	Level 1
Year 09 – 10	71%	38 students 13%	172 students 58%	83 students 28%	4 students 1%
Year 10 – 11	74%	9 students 3%	211 students 71%	77 students 26%	2 students 1%

District Report 2010 - Testing

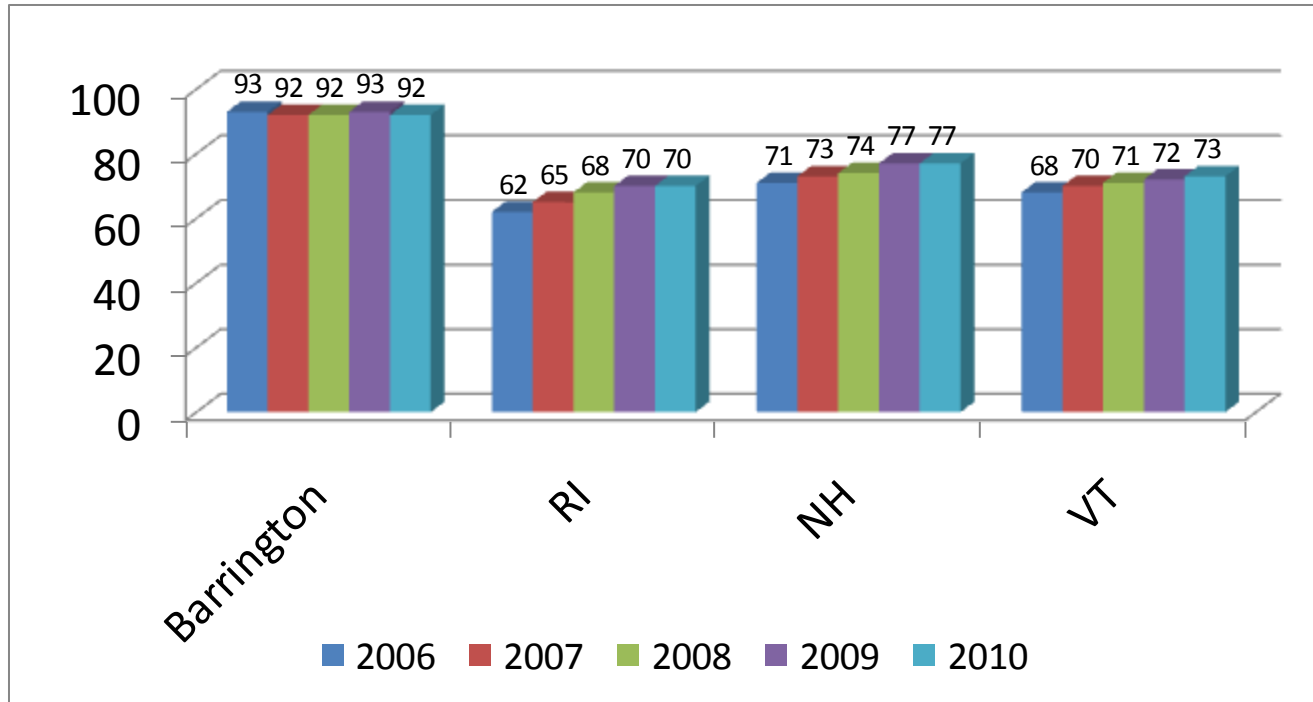
Reading Proficiency Barrington vs State



District Report 2010 - Testing

Grades 3-8 NECAP Proficiency

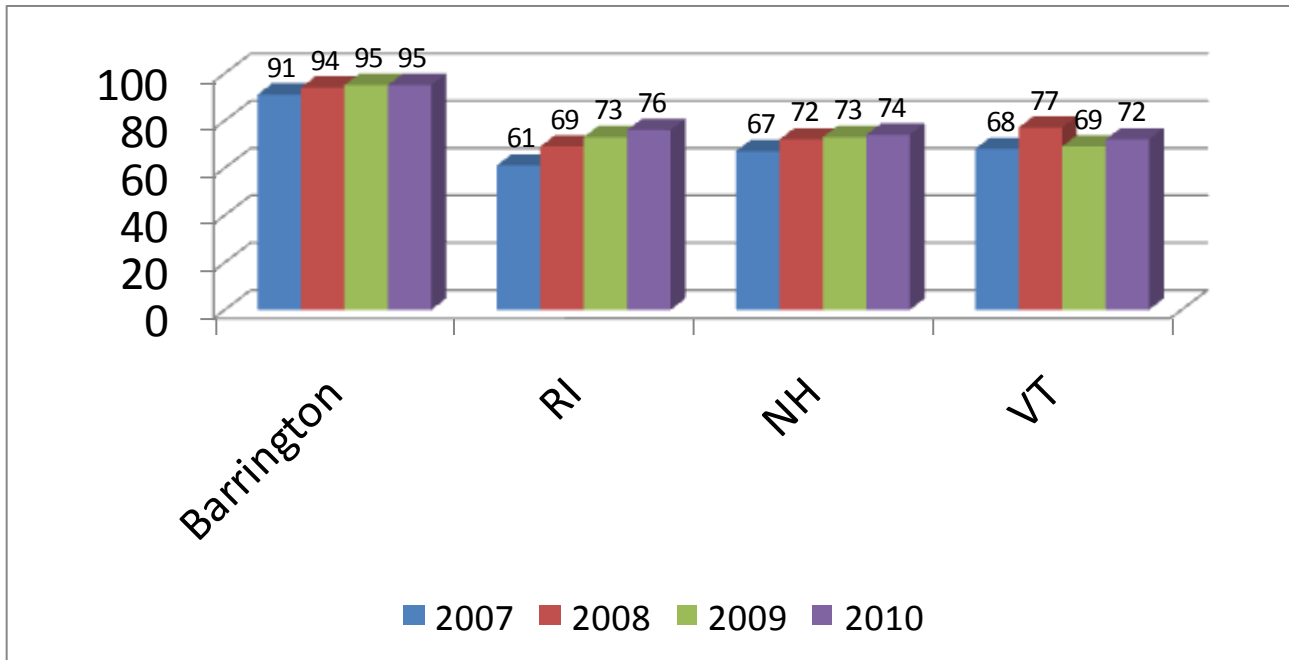
READING



District Report 2010 - Testing

Grades 11 NECAP Proficiency

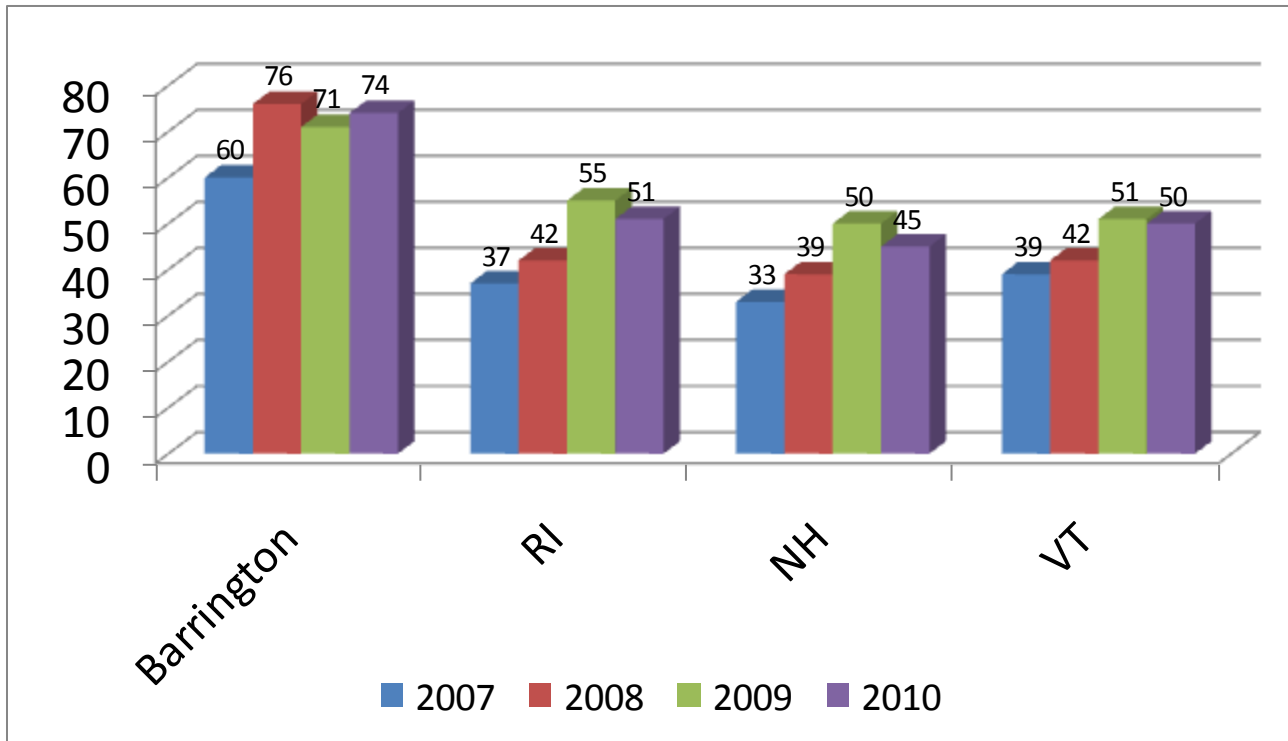
READING



District Report 2010 - Testing

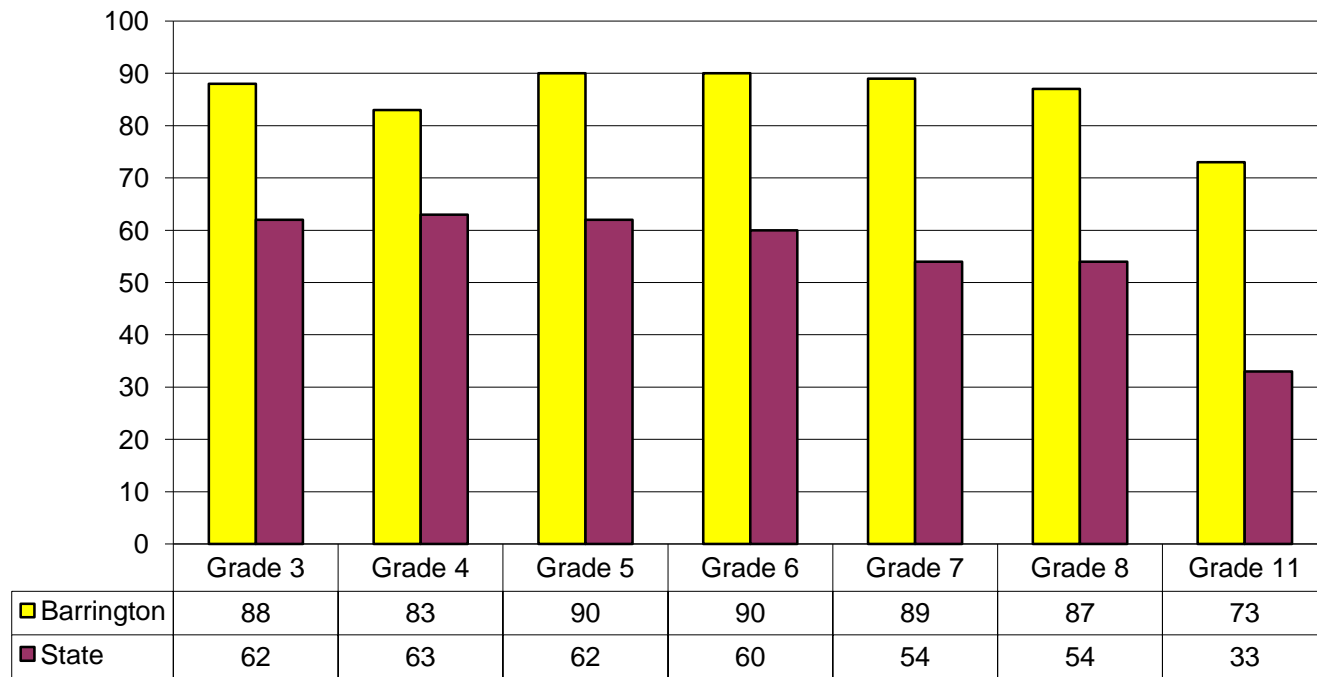
Grades 11 NECAP Proficiency

Writing



District Report 2010 - Testing

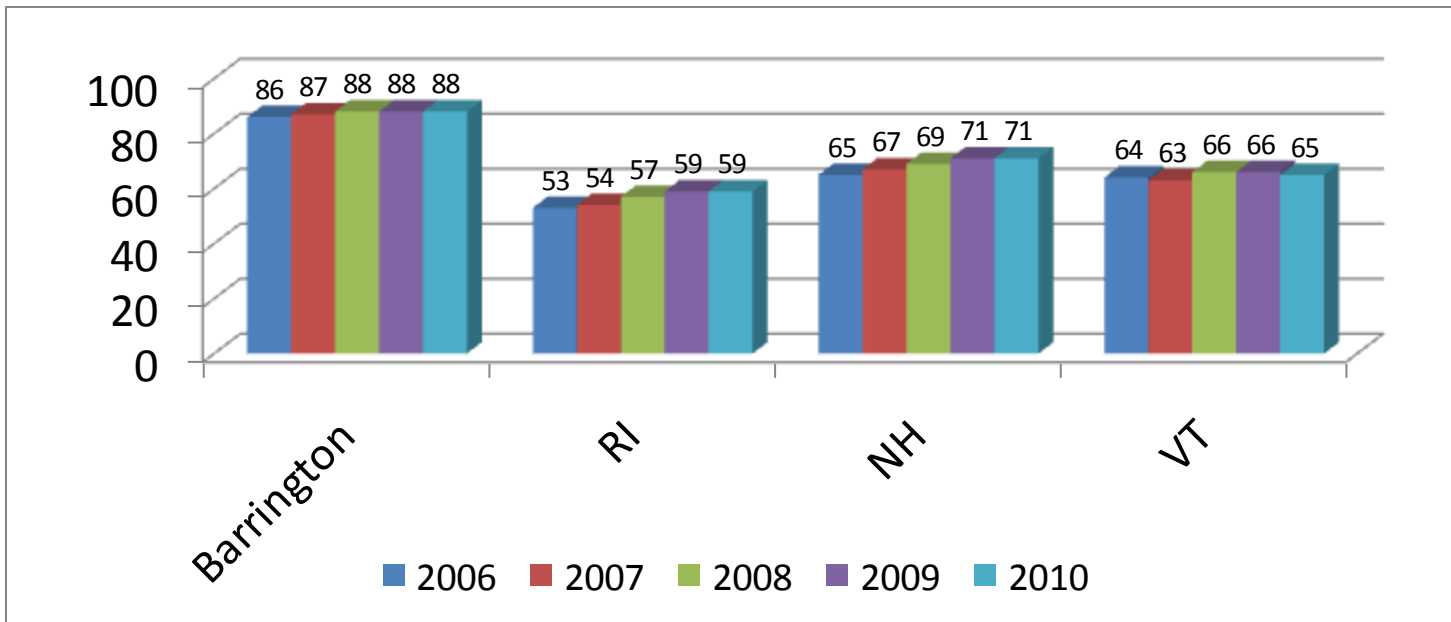
Math Proficiency Barrington vs. State



District Report 2010- Testing

Grades 3-8 NECAP Proficiency

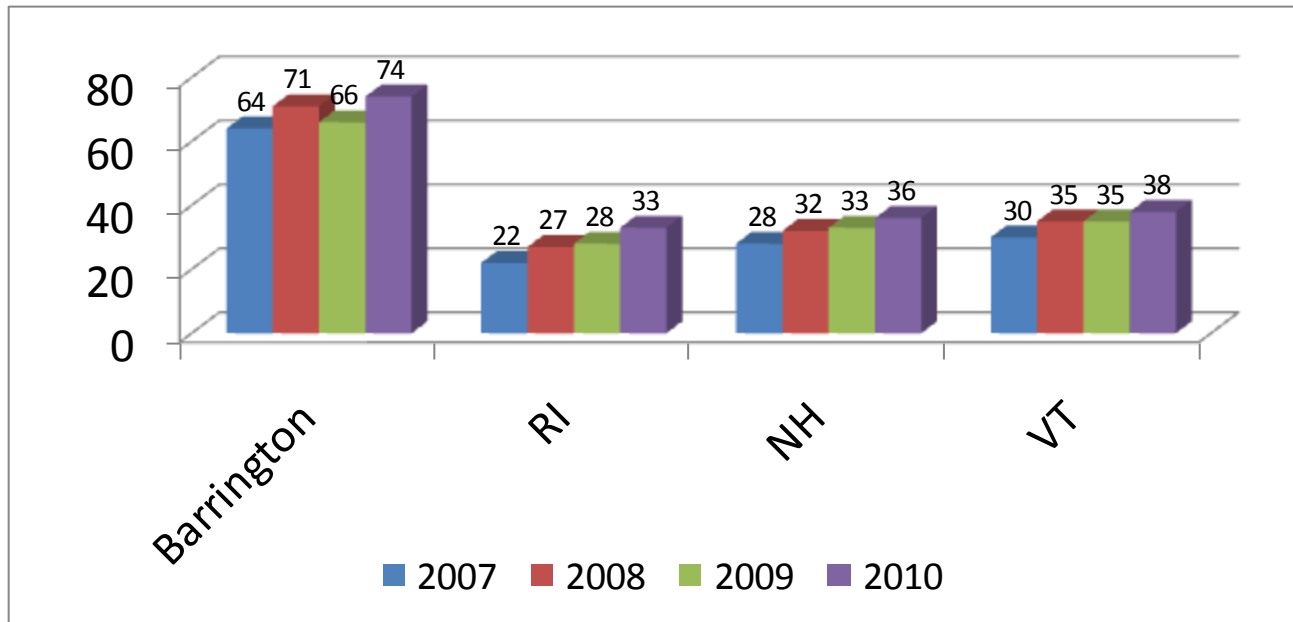
MATHEMATICS



District Report 2010 - Testing

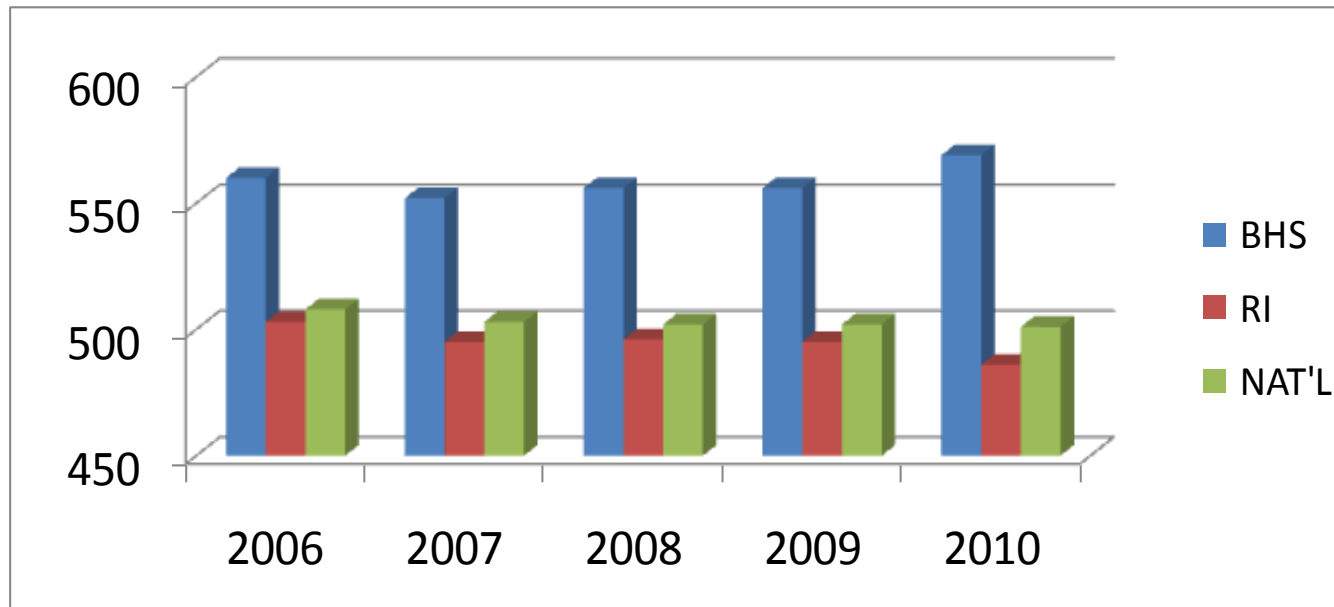
Grades 11 NECAP Proficiency

MATHEMATICS



District Report 2010 - Testing

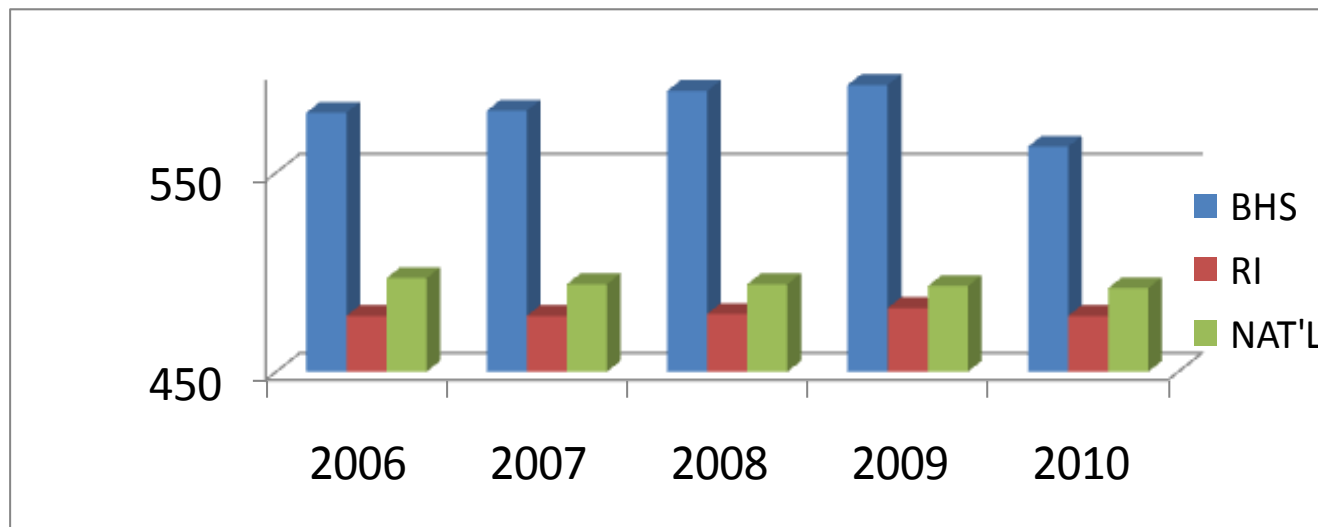
VERBAL SAT I SCORES



BHS	560	552	556	556	569	570
RI	503	495	496	495	486	485
NAT'L	508	503	502	502	501	501

District Report 2010 - Testing

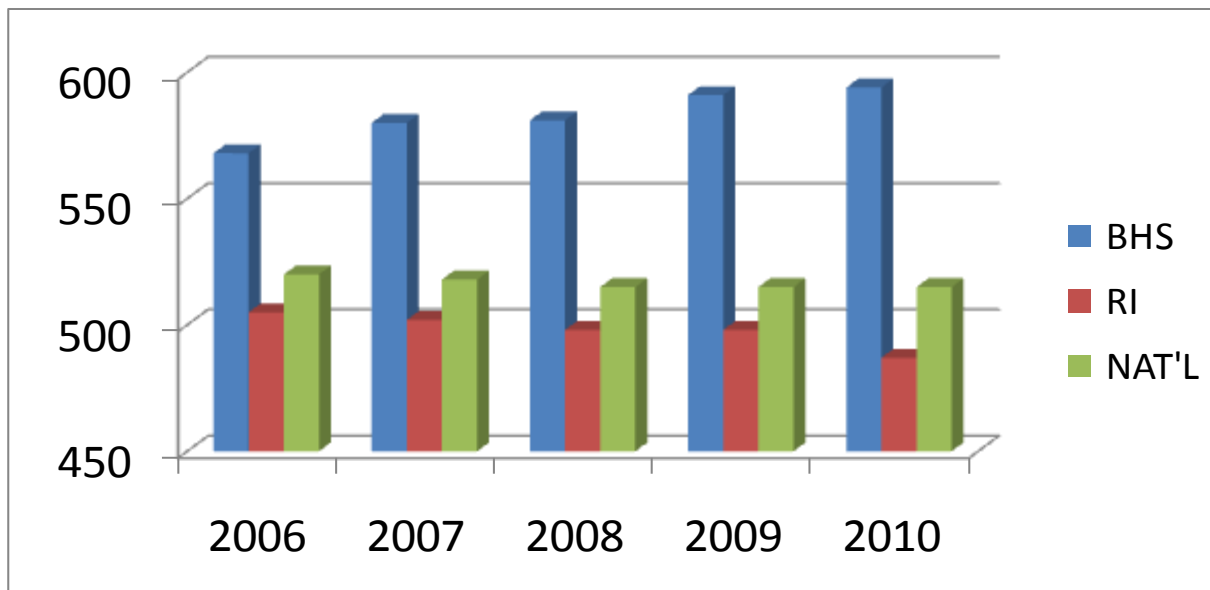
WRITING SAT I SCORES



BHS	543	559	559	569	563
RI	478	478	479	482	478
NAT'L	497	494	494	493	492

District Report 2010 - Testing

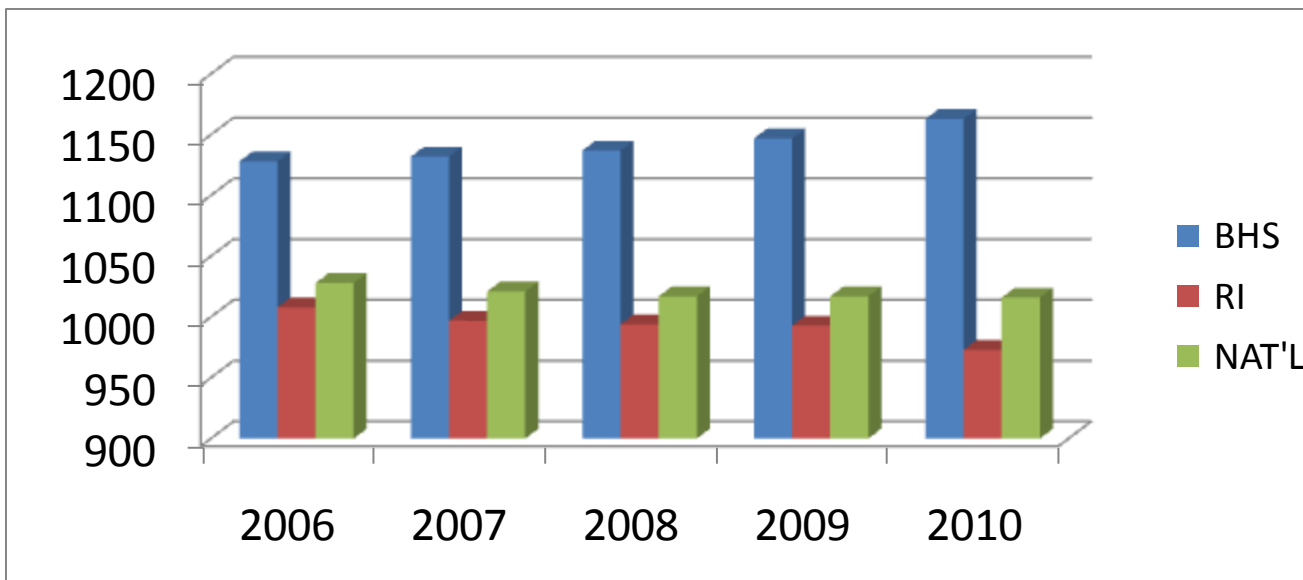
MATH SAT I SCORES



BHS	580	581	591	594	589
RI	502	498	498	487	488
NAT'L	518	515	515	515	516

District Report 2010 - Testing

COMBINED READING & MATH SAT I SCORES



BHS	1132	1137	1147	1163	1159
RI	997	994	993	973	973
NAT'L	1021	1017	1017	1016	1017

District Report 2010 - Testing

AP COURSES	ENROLLED	TESTED	%
Biology	40	39	98%
Calculus AB	58	58	100%
Chemistry	21	18	86%
Computer Science A	9	9	100%
English	96	93	86%
French	21	16	76%
Government	74	69	93%
Latin	11	10	91%
Physics	31	31	100%
Spanish	19	19	100%
Statistics	25	23	92%
U.S. History	30	28	93%
World History	31	31	100%
TOTAL	466	444	95%
220 students took at least one AP Examination.			

ADVANCED PLACEMENT SCORES FOR 2010								
SUBJECT	5	4	3	2	1	TOTAL	3 or Higher	Average
Biology	21	6	10	1	1	39	95%	4.154
Calculus AB	45	7	6	0	0	58	100%	4.672
Chemistry	7	5	5	1	0	18	95%	4.000
Computer Science A	4	3	1	1	0	9	89%	4.111
English (Lit/Comp)	18	34	28	12	1	93	86%	3.602
Environmental Science	0	1	0	0	0	1	100%	4.000
French Language	4	1	3	6	2	16	50%	2.938
Government	24	22	19	3	1	69	94%	3.942
Latin Vergil	3	3	3	1	0	10	90%	3.800
Physics B	13	14	3	1	0	31	98%	4.258
Physics C-Elec & Mag	0	1	0	0	0	1	100%	4.000
Physics C - Mech	1	0	0	0	0	1	100%	5.000
Spanish Language	2	3	2	9	3	19	37%	2.579
Statistics	7	8	7	0	1	23	96%	3.870
U.S. History	16	7	4	1	0	28	96%	4.357
World History	17	8	4	2	0	31	94%	4.290
TOTAL	182	123	95	38	9	447	89%	

District Report 2010 - Testing

RI Comparison – Schools in 2010 NECAP top 5

<i>School</i>	<i>Per Pupil Spending</i>	<i>NECAP Reading</i>	<i>NECAP Math</i>	<i>NECAP Writing</i>	<i>SAT Reading</i>	<i>SAT Math</i>	<i>SAT Writing</i>	<i>Graduation Rate</i>
Barrington High School	\$12,135	95%	74%	74%	570	589	563	96%
Block Island School	\$31,139	74%	63%	57%	*	*	*	100%
Classical High School	\$14,859	98%	49%	74%	527	528	515	98%
East Greenwich High School	\$14,086	92%	68%	80%	591	602	597	94%
Exeter-W. Greenwich Reg. HS	\$15,738	81%	67%	69%	536	522	530	90%
North Smithfield High School	\$12,060	84%	39%	74%	518	527	510	87%
Scituate High School	\$12,665	93%	48%	62%	526	530	517	86%
South Kingstown High School	\$16,041	86%	59%	65%	546	553	535	89%
Times2 Academy	\$14,859	95%	38%	54%	443	426	442	97%
Toll Gate High School	\$15,929	90%	38%	68%	494	502	503	79%
RI State Averages	\$14,186	76%	33%	51%	485	478	488	79

District Report 2010 - Testing

Massachusetts – Best Public High Schools

Boston Magazine, September 2, 2010

RANK	SCHOOL	ENROLLMENT	STUDENT-TO-TEACHER RATIO	PER-PUPIL SPENDING	MCAS SCORES			SAT SCORES			GRADUATION RATE	PERCENTAGE TO COLLEGE	SPORTS TEAMS	CLUBS
					ENGLISH	MATH	SCIENCE	READING	WRITING	MATH				
1	WESTON HIGH SCHOOL	715	10.8:1	\$18,023	98	96	86	604	611	626	97.1	93.4	28	55
2	DOVER-SHERBORN REGIONAL HIGH SCHOOL	608	11.3:1	\$15,787	99	98	98	596	593	607	100	94.5	22	20
3	LEXINGTON HIGH SCHOOL	1,955	12.4:1	\$15,368	97	96	94	614	618	631	95.4	86.2	27	94
4	WELLESLEY SENIOR HIGH SCHOOL	1,220	11.1:1	\$14,330	97	96	76	601	608	613	96.9	94.1	36	29
5	CONCORD-CARLISLE HIGH SCHOOL	1,245	13.9:1	\$18,328	96	88	93	593	593	611	96.7	92.6	21	56
6	BEDFORD HIGH SCHOOL	769	10.9:1	\$15,616	96	93	86	566	562	592	95.1	77.7	28	34
7	BROOKLINE HIGH SCHOOL	1,760	11.7:1	\$16,847	92	89	80	571	569	587	91.2	85.2	33	47
8	WAYLAND HIGH SCHOOL	891	13.2:1	\$14,342	95	97	89	589	581	608	98.2	91.2	33	48
9	NEWTON NORTH HIGH SCHOOL	1,770	11:1	\$16,243	91	90	80	587	583	600	93.6	74.9	32	77
10	NEWTON SOUTH HIGH SCHOOL	1,719	12.7:1	\$16,243	93	90	82	596	599	615	96.3	91.3	18	54
11	WESTWOOD HIGH SCHOOL	857	12.5:1	\$13,839	96	95	90	547	558	576	98.6	93.8	27	46
12	HAMILTON-WENHAM REGIONAL HIGH SCHOOL	698	11.5:1	\$13,955	98	92	87	565	565	561	97.8	86.1	18	19
13	MANCHESTER ESSEX REGIONAL HIGH SCHOOL	439	12.2:1	\$13,684	99	97	92	540	534	550	95.1	90	22	20
14	SHARON HIGH SCHOOL	1,155	13.5:1	\$14,334	98	96	88	579	575	584	95.7	90.6	27	19
15	BROMFIELD SCHOOL	744	14.5:1	\$12,968	94	94	93	609	613	597	93.5	96.1	25	15
16	CAMBRIDGE RINDGE AND LATIN SCHOOL	1,583	9.7:1	\$26,337	74	68	47	465	460	468	89.3	66	28	43
17	COHASSET HIGH SCHOOL	692	12.3:1	\$13,136	98	98	79	549	560	562	92.5	89.9	24	8
18	WESTBOROUGH HIGH SCHOOL	1,073	13.3:1	\$13,357	96	96	95	557	562	581	95.4	89	27	48
19	NEEDHAM HIGH SCHOOL	1,434	14.3:1	\$12,955	97	96	90	577	576	578	98.1	91.5	33	70
20	LINCOLN-SUDBURY REGIONAL HIGH SCHOOL	1,615	12.9:1	\$15,775	94	92	53	573	575	600	96.4	88.8	32	14
21	HOLLISTON HIGH SCHOOL	877	13:1	\$11,413	94	99	93	541	551	581	96.4	89.6	25	19
22	BOSTON LATIN SCHOOL	1,622	22:1	\$17,900	99	100	96	624	614	628	95.4	94.2	24	130
23	MARBLEHEAD HIGH SCHOOL	944	13.2:1	\$13,338	95	93	80	554	548	554	88.8	87.9	27	45
24	HOPKINTON HIGH SCHOOL	1,021	13.7:1	\$11,555	97	94	95	548	549	566	97.8	85.9	25	37
25	WINCHESTER HIGH SCHOOL	1,072	13.9:1	\$11,373	95	93	83	577	584	596	96.6	92.7	27	29

Barrington High School **1157** **18.9:1** **\$12,135** **N/A** **570** **563** **589** **95.7** **90**

District Report 2010

ENROLLMENT

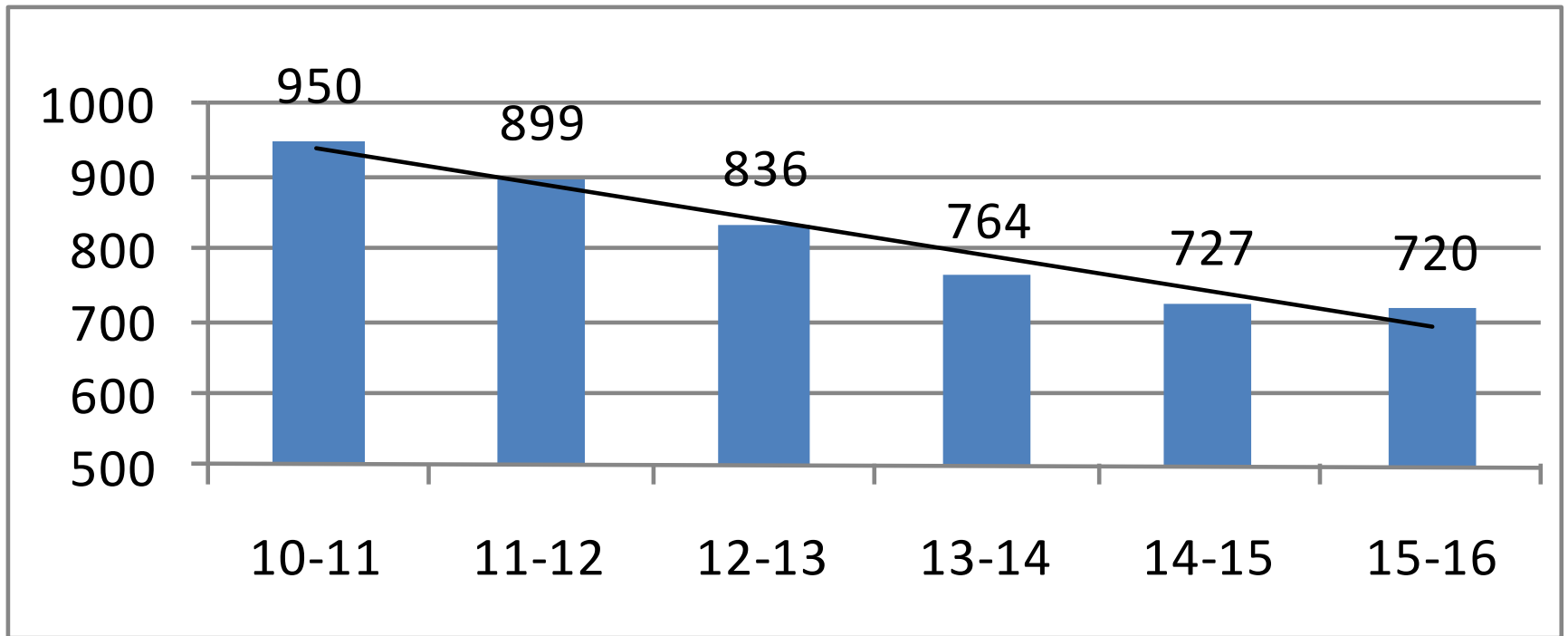
District Report 2010 - Enrollment

Current & Projected Class Sizes – PK-3

ELEMENTARY CLASS SIZES						
	SOWAMS		NAYATT		PRIMROSE HILL	
Grade	10-11	11-12	10-11	11-12	10-11	11-12
Preschool			19	25	19	19
K	13	14	13	15	16	16
	14	14	13	15	17	17
	14	14	14	15	17	17
	14	15	14	15	17	17
One	21	22	23	17	21	19
	21	22	24	17	21	20
	22	23	24	18	21	20
			24	18	21	20
Two	18	21	21	19	16	21
	19	21	23	19	16	21
	19	22	23	19	17	21
	19		24	19	17	21
				19	22	
Three	19	18	22	22	21	22
	20	19	22	23	21	22
	20	19	22	23	21	22
	20	19	22	23	22	22
			22			
Totals	273	263	369	341	343	337

District Report 2010 – NESDEC Projected Enrollment

Projection K - 3



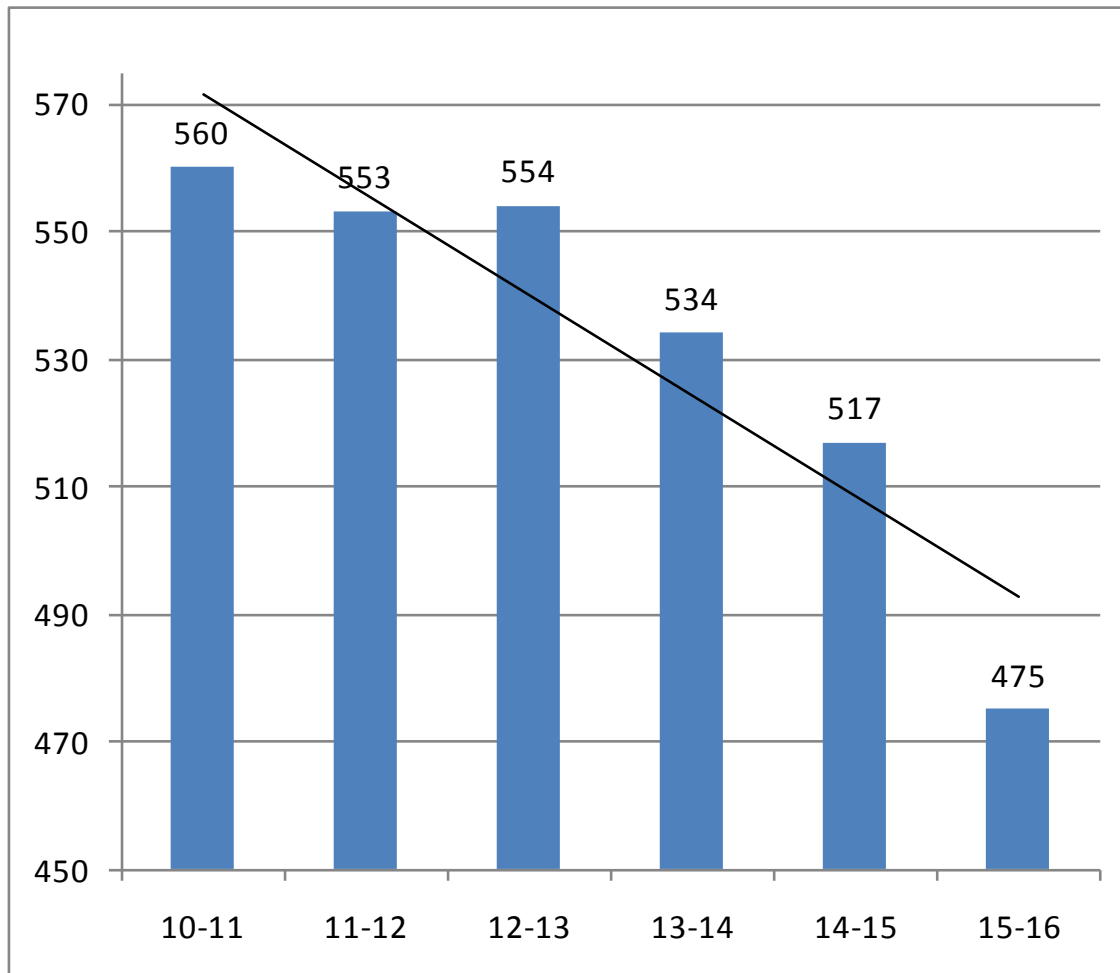
District Report 2010 - Enrollment

Current & Projected Class Sizes – 4-5

HAMPDEN MEADOWS		
	10-11	11-12
Grade 4	24	25
	24	25
	24	25
	24	25
	24	25
	24	25
	24	25
	24	25
	24	25
	24	25
	25	26
Total Grade 4	265	276
Grade 5	24	24
	24	24
	24	24
	24	24
	24	24
	24	24
	25	24
	25	24
	25	24
	25	24
	25	25
Total Grade 5	294	265
Totals	559	541

District Report 2010 - NESDEC Projected Enrollment

Projection 4 - 5



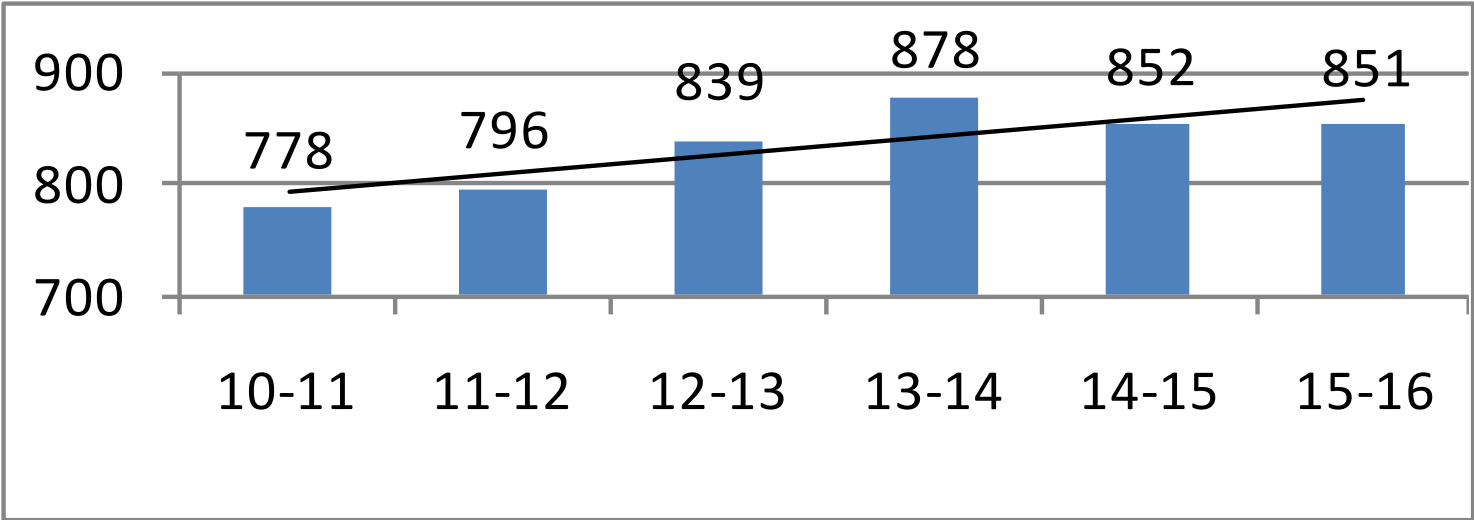
District Report 2010 - Enrollment

Current & Projected Class Sizes – 6 - 8

Middle School				
	10-11		11-12	
	Size	Ave	Size	Ave
Grade 6				
Three Teacher Team	70	23.3	0	0.0
Four Teacher Team	0	0.0	98	24.5
Four Teacher Team	93	23.3	98	24.5
Four Teacher Team	<u>93</u>	23.3	<u>98</u>	24.5
	256		294	
Grade 7				
Three Teacher Team	64	21.3	70	23.3
Four Teacher Team	85	21.3	93	23.3
Four Teacher Team	<u>85</u>	21.3	<u>93</u>	23.3
	234		256	
Grade 8				
Three Teacher Team	79	26.3	64	21.3
Four Teacher Team	105	26.3	85	21.3
Four Teacher Team	<u>105</u>	26.3	<u>85</u>	21.3
	289		234	
Total	779		784	

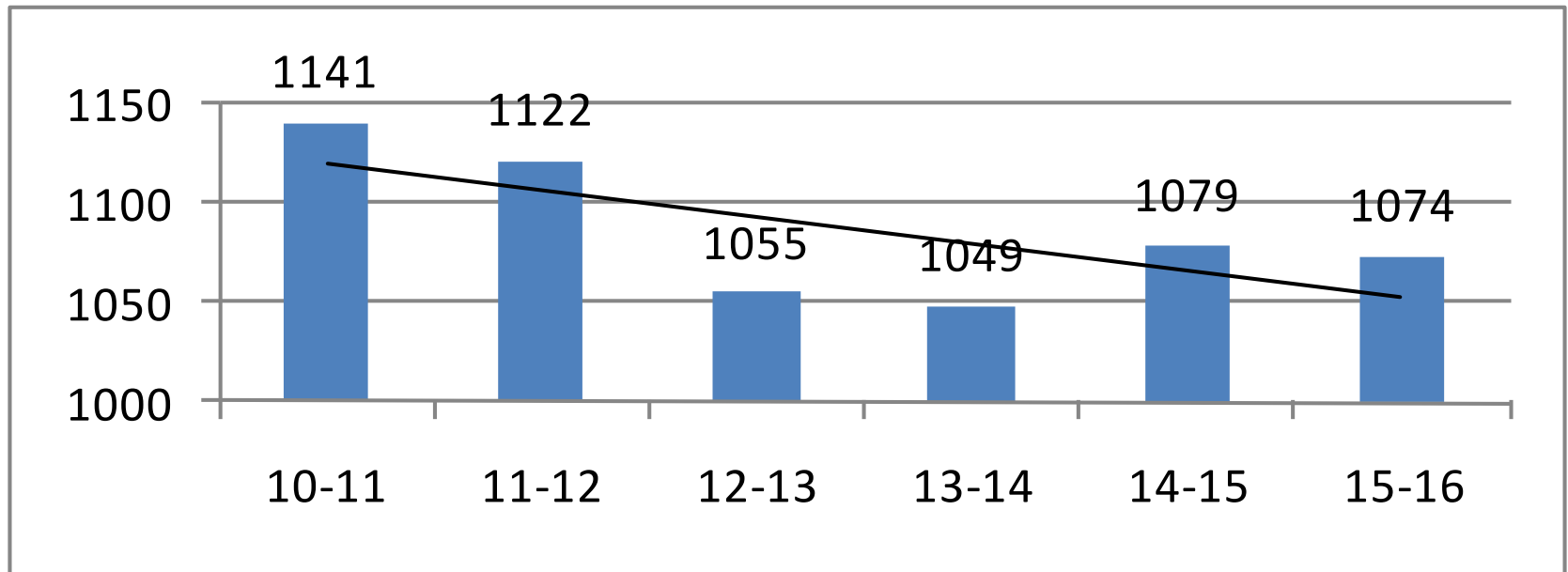
District Report 2010- NESDEC Projected Enrollment

Projection 6 - 8

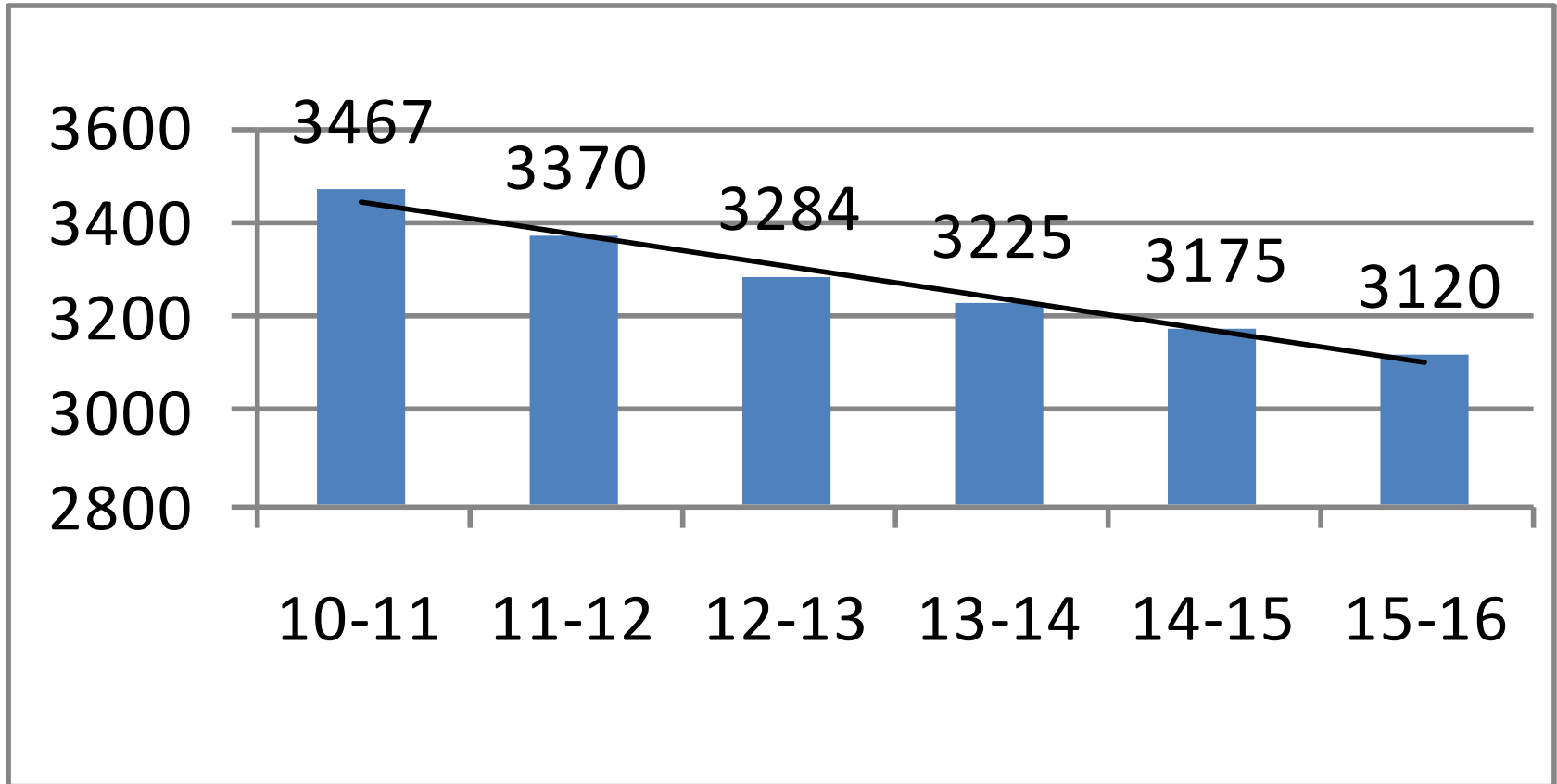


District Report 2010 - NESDEC Projected Enrollment

Projection 9 - 12



District Report 2010 - NESDEC Projected Enrollment



District Report 2010

QUESTIONS

