

BARRINGTON PUBLIC SCHOOLS

DISTRICT REPORT

March 25, 2010

District Report 2009

TESTING

District Report 2009- Testing

Proficient with Distinction (Level 4)

Student's performance demonstrates an ability to read and comprehend grade-appropriate text. Student is able to analyze and interpret literary and informational text. Student offers insightful observations/assertions that are well supported by references to the text. Student uses range of vocabulary strategies and breadth of vocabulary knowledge to read and comprehend a wide variety of texts.

Proficient (Level 3)

Student's performance demonstrates an ability to read and comprehend grade-appropriate text. Student is able to analyze and interpret literary and informational text. Student makes and supports relevant assertions by referencing text. Student uses vocabulary strategies and breadth of vocabulary knowledge to read and comprehend text.

Partially Proficient (Level 2)

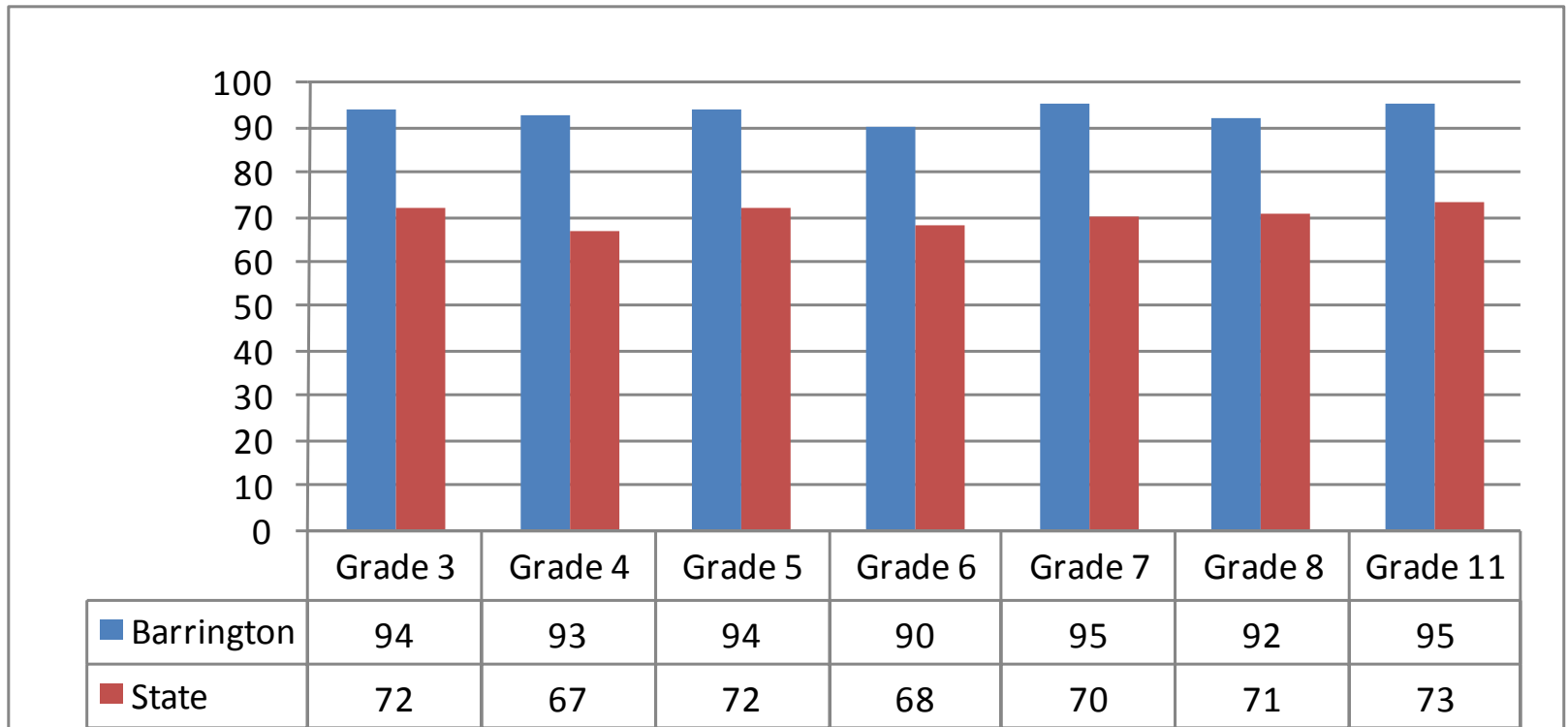
Student's performance demonstrates an inconsistent ability to read and comprehend grade-appropriate text. Student attempts to analyze and interpret literary and informational text. Student may make and/or support assertions by referencing text. Student's vocabulary knowledge and use of strategies may be limited and may impact the ability to read and comprehend text.

Substantially Below Proficient (Level 1)

Student's performance demonstrates minimal ability to derive/construct meaning from grade appropriate text. Student may be able to recognize story elements and text features. Student's limited vocabulary knowledge and use of strategies impacts the ability to read and comprehend text.

District Report 2009 - Testing

Reading Proficiency Barrington vs State



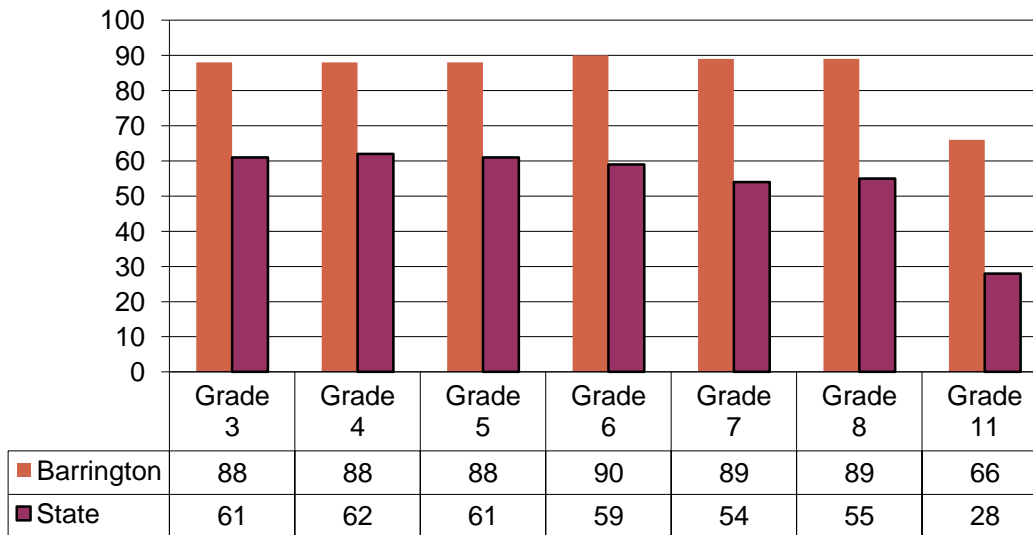
District Report 2009 - Testing

MATH

| Beginning Grade | Achievement Level | | | | | | | |
|-----------------|-------------------|---------|---------|---------|---------|---------|---------|---------|
| | Barrington | | | | State | | | |
| | Level 4 | Level 3 | Level 2 | Level 1 | Level 4 | Level 3 | Level 2 | Level 1 |
| Grade 3 | 38 | 50 | 10 | 2 | 18 | 43 | 20 | 19 |
| Grade 4 | 33 | 55 | 10 | 2 | 16 | 46 | 19 | 19 |
| Grade 5 | 41 | 47 | 5 | 6 | 17 | 44 | 17 | 23 |
| Grade 6 | 57 | 33 | 5 | 6 | 19 | 40 | 18 | 23 |
| Grade 7 | 50 | 39 | 7 | 4 | 16 | 38 | 21 | 25 |
| Grade 8 | 53 | 36 | 7 | 4 | 16 | 39 | 21 | 25 |
| Grade 11 | 10 | 56 | 22 | 12 | 2 | 26 | 28 | 45 |

District Report 2009 - Testing

Math Proficiency Barrington vs. State



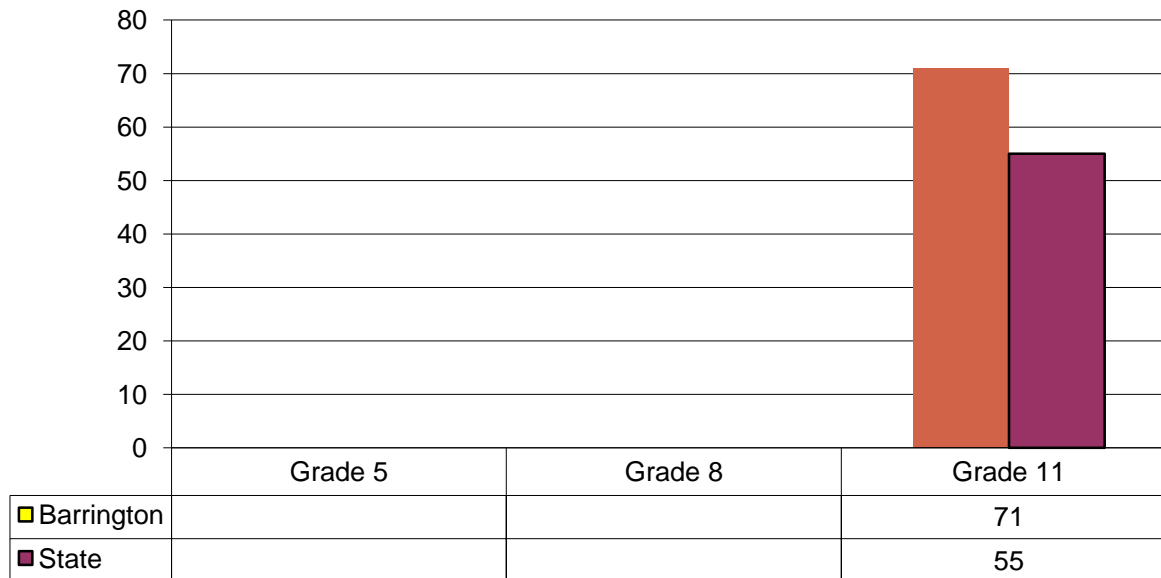
District Report 2009 - Testing

WRITING

| | Achievement Level | | | | | | | |
|-----------------|-------------------|---------|---------|---------|---------|---------|---------|---------|
| | Barrington | | | | State | | | |
| Beginning Grade | Level 4 | Level 3 | Level 2 | Level 1 | Level 4 | Level 3 | Level 2 | Level 1 |
| Grade 5 | not reported | | | | | | | |
| Grade 8 | not reported | | | | | | | |
| Grade 11 | 13 | 58 | 28 | 1 | 7 | 48 | 40 | 5 |

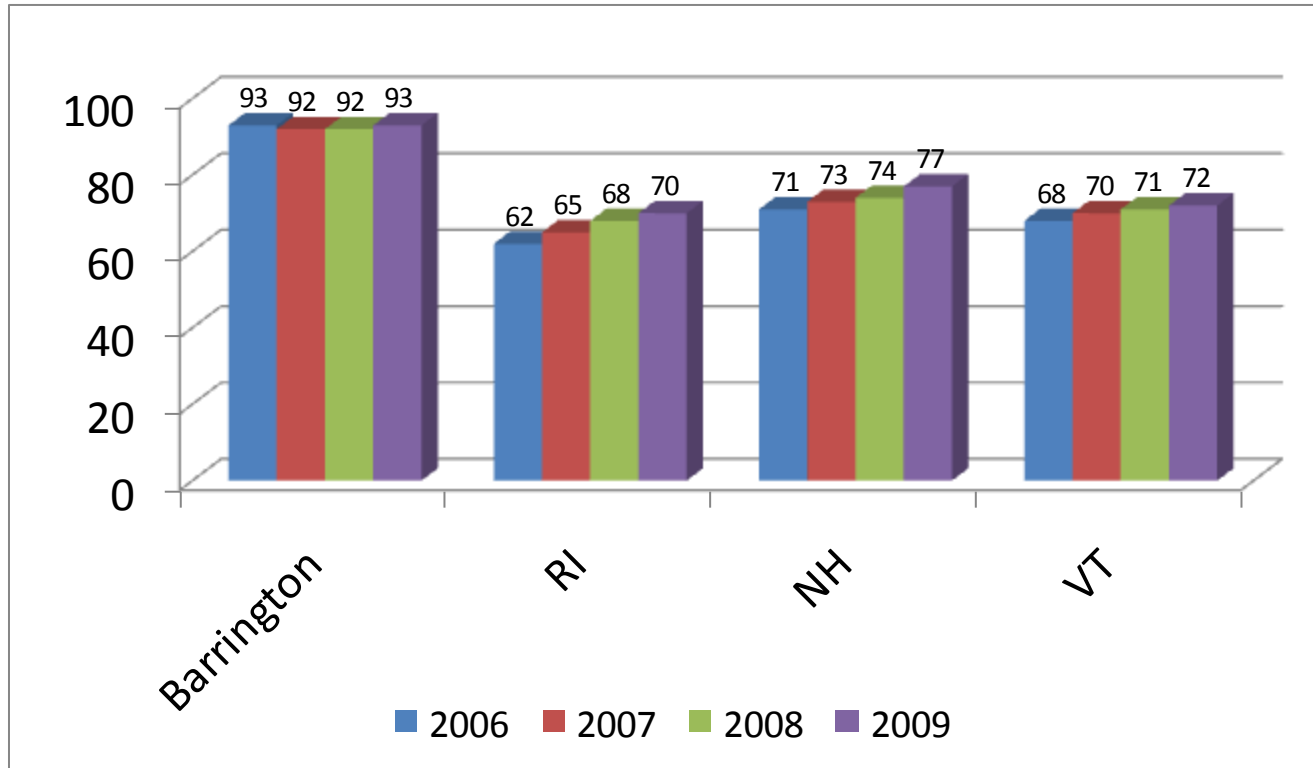
District Report 2009 Testing

Writing Proficiency Barrington vs. State



District Report 2009 - Testing

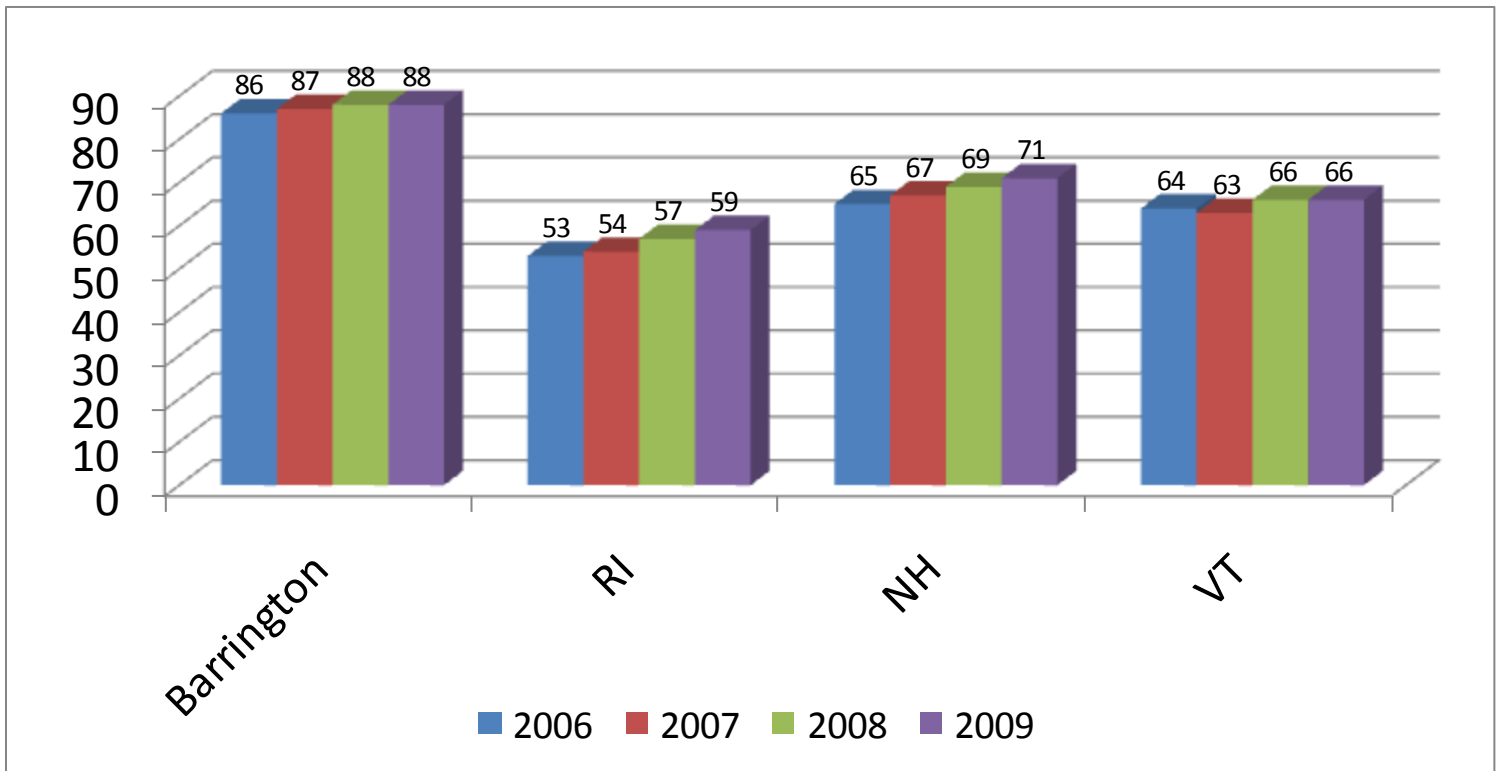
Grades 3-8 NECAP Proficiency READING



District Report 2009 - Testing

Grades 3-8 NECAP Proficiency

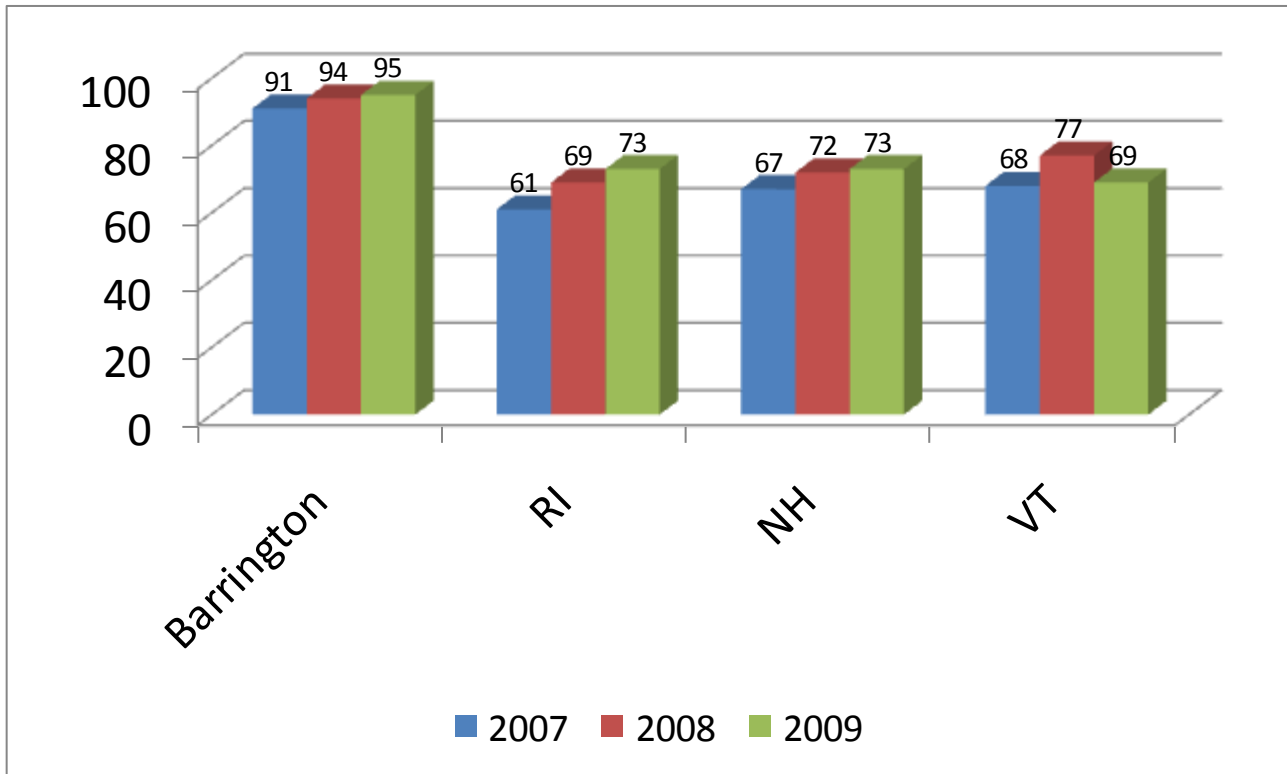
MATHEMATICS



District Report 2009 - Testing

Grades 11 NECAP Proficiency

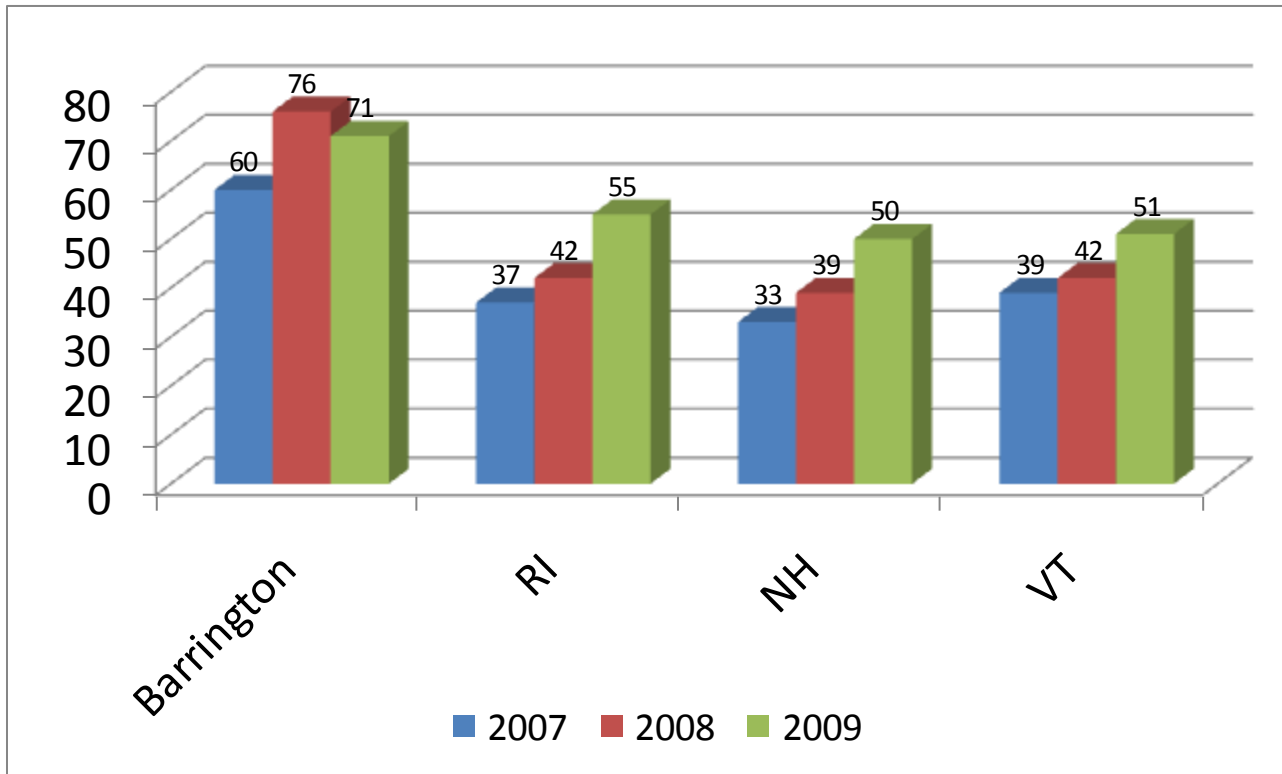
READING



District Report 2009 - Testing

Grades 11 NECAP Proficiency

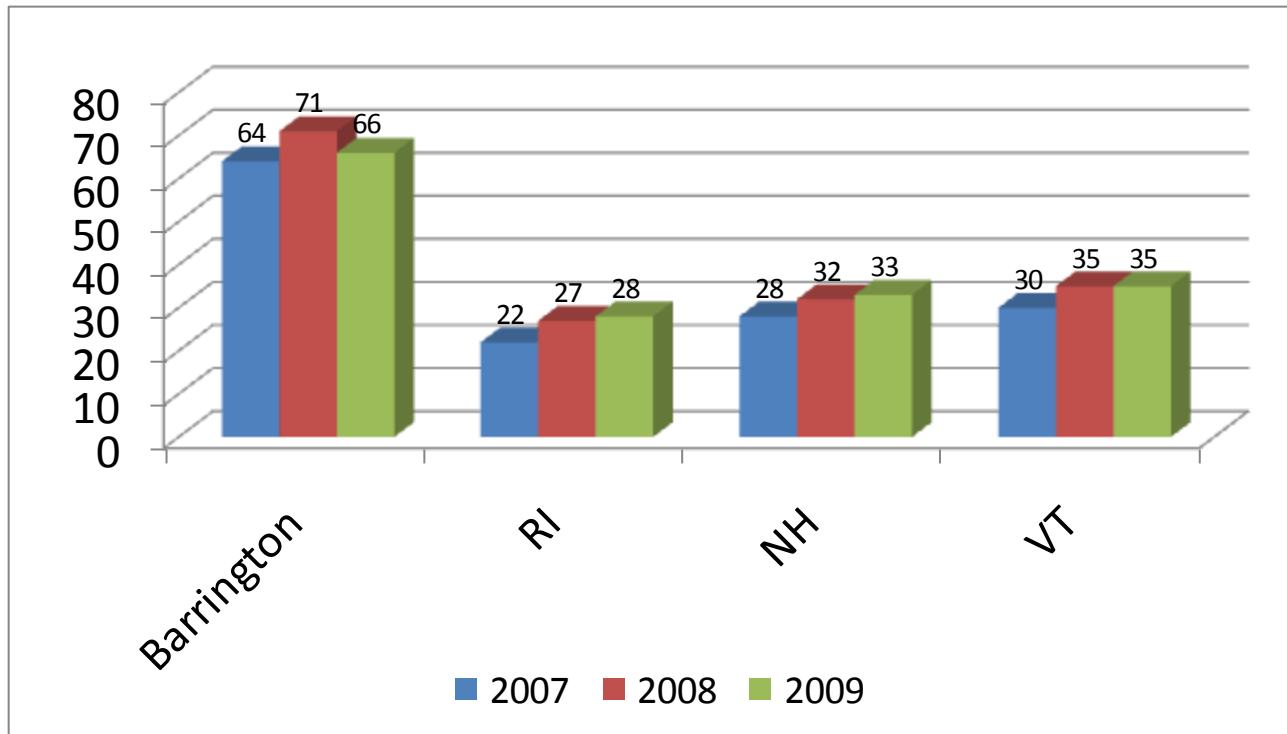
Writing



District Report 2009 - Testing

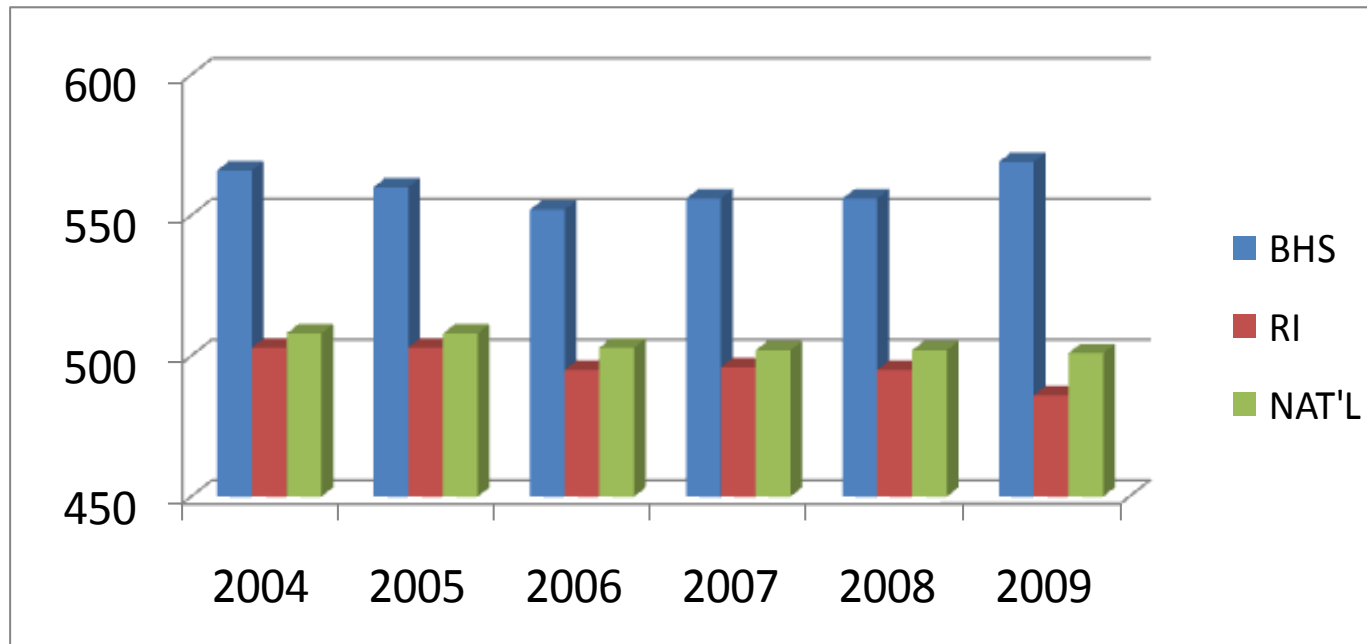
Grades 11 NECAP Proficiency

MATHEMATICS



District Report 2009 - Testing

VERBAL SAT I SCORES



| | | | | | | |
|-------|-----|-----|-----|-----|-----|-----|
| BHS | 566 | 560 | 552 | 556 | 556 | 569 |
| RI | 503 | 503 | 495 | 496 | 495 | 486 |
| NAT'L | 508 | 508 | 503 | 502 | 502 | 501 |

District Report 2009 - Testing

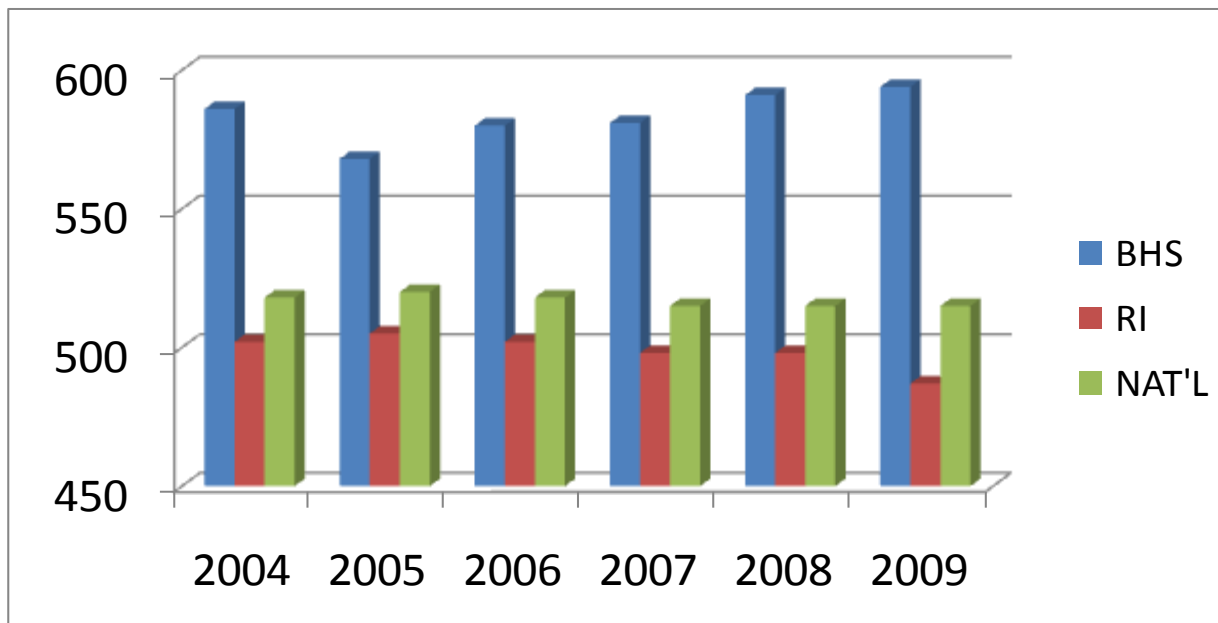
WRITING SAT I SCORES



| | | | | |
|-------|-----|-----|-----|-----|
| BHS | 543 | 559 | 559 | 569 |
| RI | 478 | 478 | 479 | 482 |
| NAT'L | 497 | 494 | 494 | 493 |

District Report 2009 - Testing

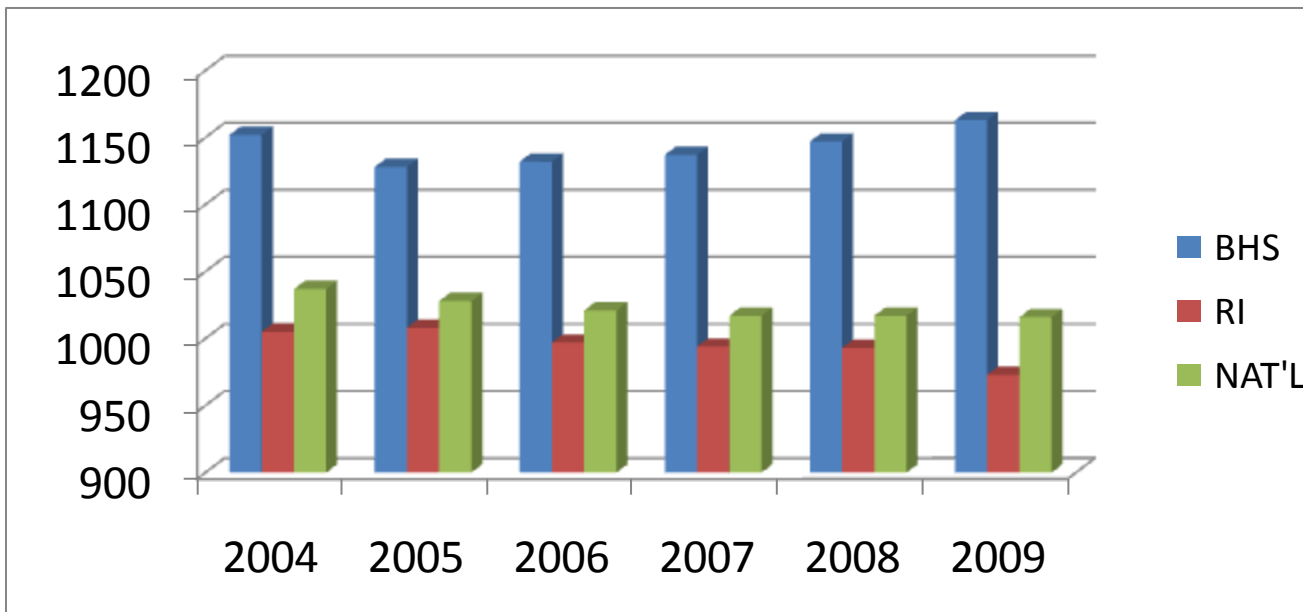
MATH SAT I SCORES



| | | | | | | |
|-------|-----|-----|-----|-----|-----|-----|
| BHS | 586 | 568 | 580 | 581 | 591 | 594 |
| RI | 502 | 505 | 502 | 498 | 498 | 487 |
| NAT'L | 518 | 520 | 518 | 515 | 515 | 515 |

District Report 2009 - Testing

COMBINED READING & MATH SAT I SCORES



| | | | | | | |
|-------|------|------|------|------|------|------|
| BHS | 1152 | 1128 | 1132 | 1137 | 1147 | 1163 |
| RI | 1005 | 1008 | 997 | 994 | 993 | 973 |
| NAT'L | 1037 | 1028 | 1021 | 1017 | 1017 | 1016 |

District Report 2009 - Testing

| AP COURSES | ENROLLED | TESTED | % |
|---------------------|------------|------------|------------|
| Biology | 33 | 31 | 94% |
| Calculus AB | 50 | 46 | 92% |
| Calculus BC | 11 | 11 | 100% |
| Chemistry | 23 | 22 | 96% |
| Computer Science A | 8 | 5 | 63% |
| Computer Science AB | 8 | 3 | 38% |
| English | 81 | 70 | 86% |
| French | 13 | 13 | 100% |
| Government | 77 | 74 | 96% |
| Latin | 7 | 7 | 100% |
| Physics | 30 | 27 | 90% |
| Spanish | 16 | 16 | 100% |
| Statistics | 28 | 21 | 75% |
| U.S. History | 44 | 44 | 100% |
| World History | 33 | 32 | 97% |
| TOTAL | 462 | 422 | 91% |

226 students took at least one AP Examination.

363 (86%) of the scores were 3 or higher.

ADVANCED PLACEMENT SCORES FOR 2009

| SUBJECT | 5 | 4 | 3 | 2 | 1 | TOTAL | 3 or Higher |
|---------------------|------------|------------|-----------|-----------|-----------|------------|-------------|
| Biology | 19 | 6 | 2 | 4 | 0 | 31 | 87% |
| Calculus AB | 29 | 9 | 7 | 1 | 0 | 46 | 98% |
| Calculus BC | 9 | 2 | 0 | 0 | 0 | 11 | 100% |
| Chemistry | 4 | 6 | 6 | 5 | 1 | 22 | 73% |
| Computer Science A | 2 | 1 | 1 | 1 | 0 | 5 | 80% |
| Computer Science AB | 1 | 2 | 0 | 0 | 0 | 3 | 100% |
| English (Lit/Comp) | 15 | 20 | 28 | 7 | 0 | 70 | 90% |
| French Language | 1 | 1 | 3 | 5 | 3 | 13 | 38% |
| Government | 33 | 19 | 14 | 8 | 0 | 74 | 89% |
| Latin Vergil | 5 | 2 | 0 | 0 | 0 | 7 | 100% |
| Physics B | 16 | 7 | 3 | 0 | 0 | 26 | 100% |
| Physics C - Mech | 1 | 0 | 0 | 0 | 0 | 1 | 100% |
| Spanish Language | 3 | 5 | 1 | 4 | 3 | 16 | 56% |
| Statistics | 2 | 3 | 7 | 5 | 4 | 21 | 57% |
| U.S. History | 22 | 13 | 5 | 4 | 0 | 44 | 90% |
| World History | 14 | 13 | 1 | 4 | 0 | 32 | 87% |
| TOTAL | 176 | 109 | 78 | 48 | 11 | 422 | 86% |

District Report 2009

QUESTIONS

District Report 2009

ENROLLMENT

District Report 2009 - Enrollment

Comparison 2008 vs 2009

| School | 10/1/2008 | 10/1/2009 |
|------------------------|------------------|------------------|
| Nayatt | 386 | 368 |
| Primrose Hill | 357 | 347 |
| Sowams | 266 | 273 |
| Hampden Meadows | 469 | 535 |
| Middle School | 805 | 777 |
| High School | 1159 | 1133 |
| Total By School | 3442 | 3433 |

District Report 2009 - Enrollment

NESDEC Projection 20010-11

| | 10/01/08 | 10/01/09 | NESDEC | Diff |
|-----------------------|-----------------|-----------------|---------------|-------------|
| Special Ed. | 38 | 40 | 40 | 0 |
| Kindergarten | 189 | 185 | 184 | -1 |
| 1 | 253 | 244 | 235 | -9 |
| 2 | 251 | 262 | 252 | -10 |
| 3 | 284 | 257 | 268 | 11 |
| 4 | 237 | 286 | 264 | -22 |
| 5 | 239 | 249 | 291 | 42 |
| 6 | 269 | 235 | 253 | 18 |
| 7 | 272 | 273 | 243 | -30 |
| 8 | 266 | 269 | 273 | 4 |
| 9 | 303 | 257 | 267 | 10 |
| 10 | 297 | 303 | 253 | -50 |
| 11 | 281 | 297 | 300 | 3 |
| 12 | 291 | 276 | 290 | 14 |
| TOTAL BY GRADE | 3470 | 3433 | 3413 | -20 |

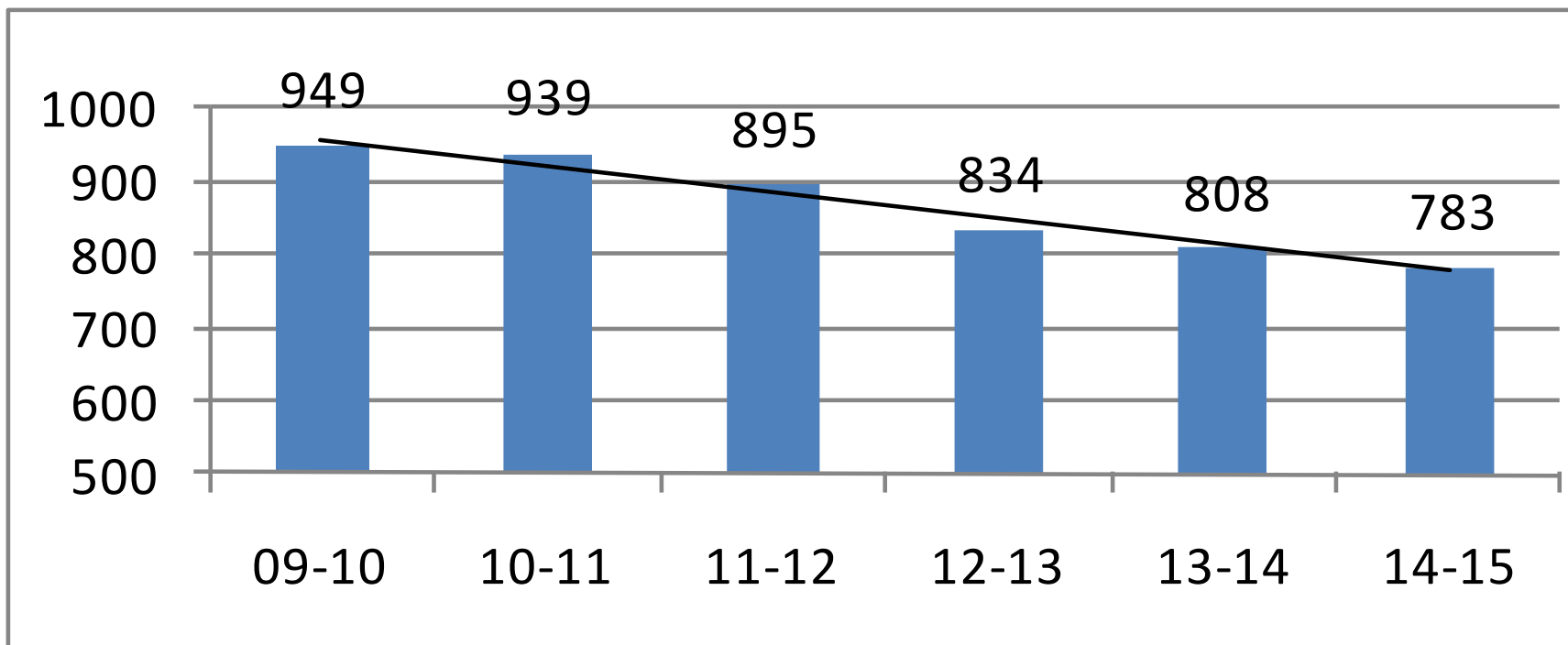
District Report 2009 - Enrollment

Current & Projected Class Sizes – PK-3

| ELEMENTARY CLASS SIZES | | | | | | |
|-------------------------------|---------------|--------------|---------------|--------------|----------------------|--------------|
| | SOWAMS | | NAYATT | | PRIMROSE HILL | |
| Grade | 09-10 | 10-11 | 09-10 | 10-11 | 09-10 | 10-11 |
| Preschool | | | 21 | 25 | 21 | 21 |
| K | 15 | 15 | 16 | 15 | 19 | 19 |
| | 15 | 15 | 17 | 15 | 19 | 19 |
| | 16 | 15 | 17 | 15 | 19 | 19 |
| | 17 | 15 | 17 | 15 | 19 | 19 |
| KF | | | | | | |
| One | 24 | 23 | 24 | 20 | 22 | 19 |
| | 24 | 23 | 24 | 20 | 22 | 19 |
| | 24 | 23 | | 20 | 22 | 19 |
| Two | 19 | 19 | 21 | 16 | 20 | 22 |
| | 19 | 18 | 21 | 16 | 20 | 22 |
| | 19 | 18 | 21 | 15 | 20 | 22 |
| | | | 21 | 15 | | |
| Three | 21 | 19 | 20 | 18 | 18 | 20 |
| | 22 | 19 | 20 | 22 | 18 | 20 |
| | | 20 | 20 | 22 | 18 | 20 |
| | | | 20 | 23 | 18 | |
| ALP/MAC | 1 | | 23 | 20 | 22 | 19 |
| | 2 | 19 | 19 | 21 | 21 | 22 |
| | 3 | 21 | 20 | 20 | 22 | 20 |
| Totals | 275 | 281 | 364 | 355 | 355 | 341 |

District Report 2009 – NESDEC Projected Enrollment

Projection K - 3



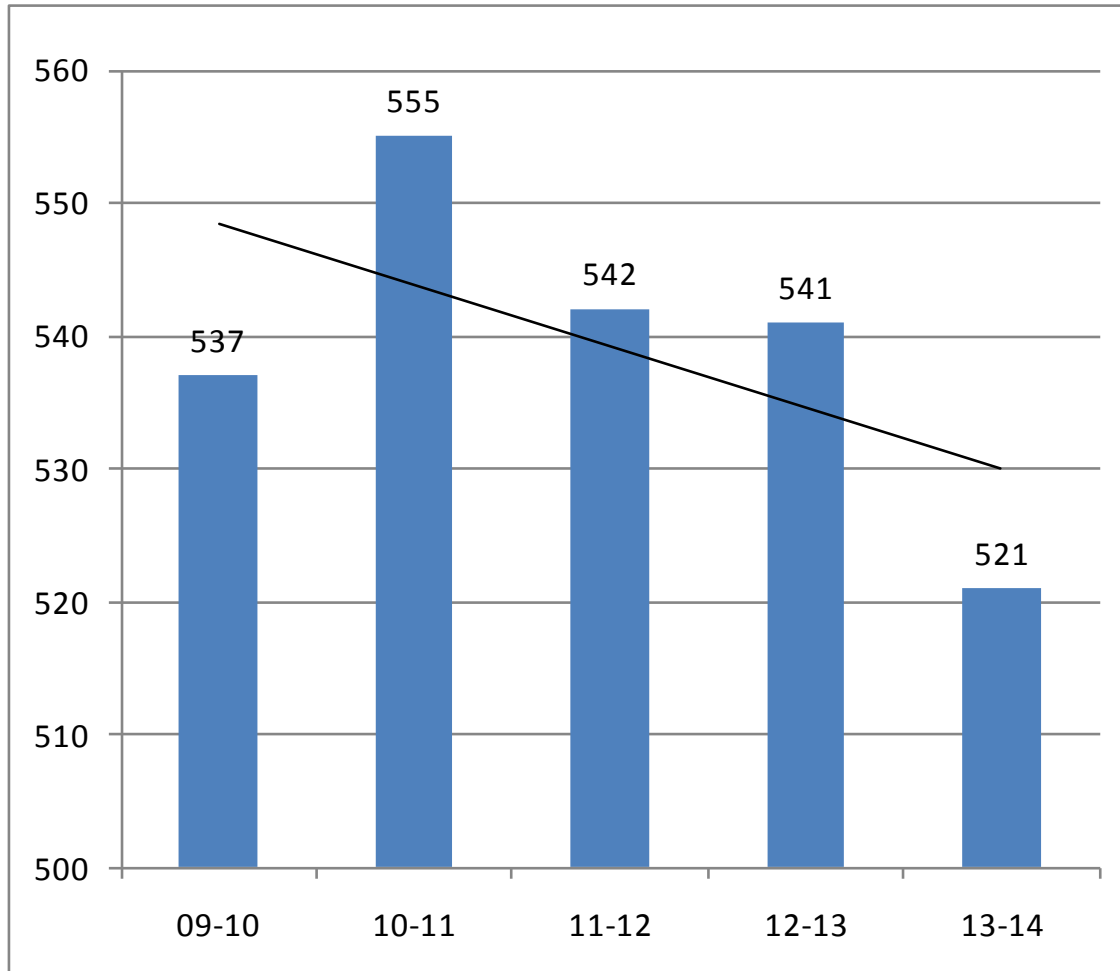
District Report 2009 - Enrollment

Current & Projected Class Sizes – 4-5

| HAMPDEN MEADOWS | | |
|-----------------|------------|------------|
| | 09-10 | 10-11 |
| Grade 4 | 24 | 26 |
| | 24 | 26 |
| | 24 | 26 |
| | 24 | 26 |
| | 24 | 26 |
| | 24 | 26 |
| | 24 | 26 |
| | 24 | 26 |
| | 24 | 26 |
| | 24 | 26 |
| | 24 | 25 |
| | 24 | |
| | 23 | |
| Grade 5 | 25 | 24 |
| | 25 | 24 |
| | 25 | 24 |
| | 25 | 24 |
| | 25 | 24 |
| | 25 | 24 |
| | 25 | 24 |
| | 25 | 24 |
| | 25 | 24 |
| | 25 | 24 |
| | 24 | 24 |
| | | 24 |
| | | 23 |
| Totals | 536 | 546 |

District Report 2009 - NESDEC Projected Enrollment

Projection 4 - 5



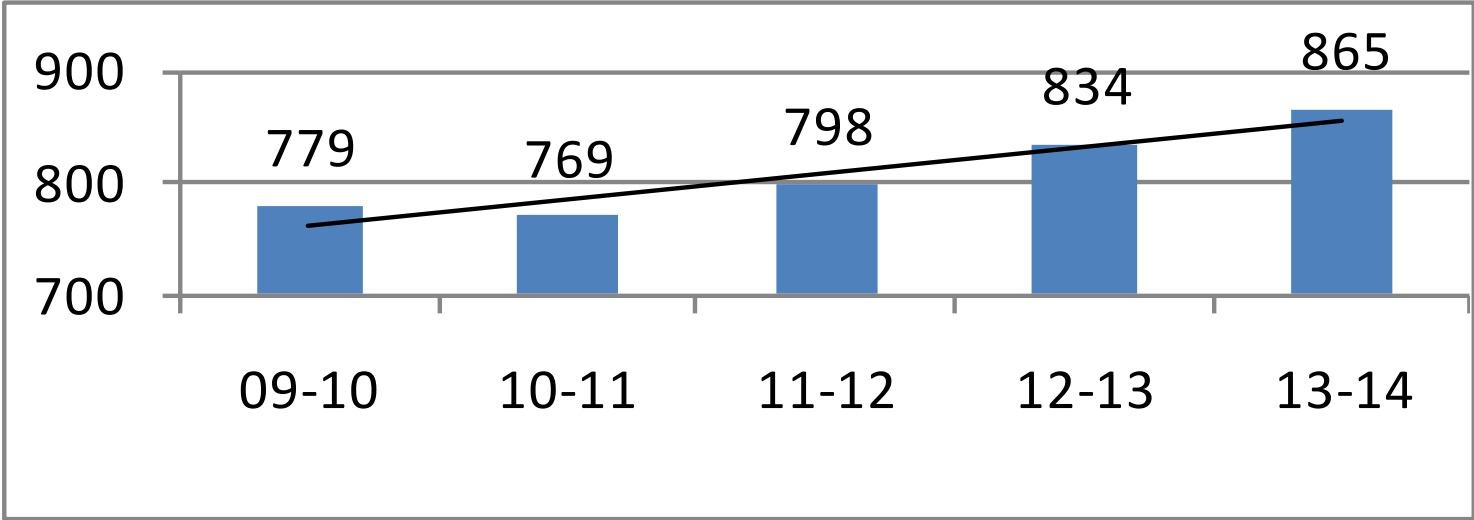
District Report 2009 - Enrollment

Current & Projected Class Sizes – 6 - 8

| Middle School | | | | |
|----------------------|--------------|------|--------------|------|
| | 09-10 | | 10-11 | |
| | Size | Ave | Size | Ave |
| Grade 6 | | | | |
| Three Teacher Team | 64 | 21.3 | 67 | 22.3 |
| Four Teacher Team | 86 | 21.5 | 91 | 22.8 |
| Four Teacher Team | 86 | 21.5 | 91 | 22.8 |
| | | | | |
| Grade 7 | | | | |
| Three Teacher Team | 75 | 25.0 | 64 | 21.3 |
| Four Teacher Team | 100 | 25.0 | 86 | 21.5 |
| Four Teacher Team | 100 | 25.0 | 86 | 21.5 |
| | | | | |
| Grade 8 | | | | |
| Three Teacher Team | 72 | 24.0 | 75 | 25.0 |
| Four Teacher Team | 97 | 24.3 | 100 | 25.0 |
| Four Teacher Team | 97 | 24.3 | 100 | 25.0 |
| | | | | |
| Total | 777 | | 760 | |

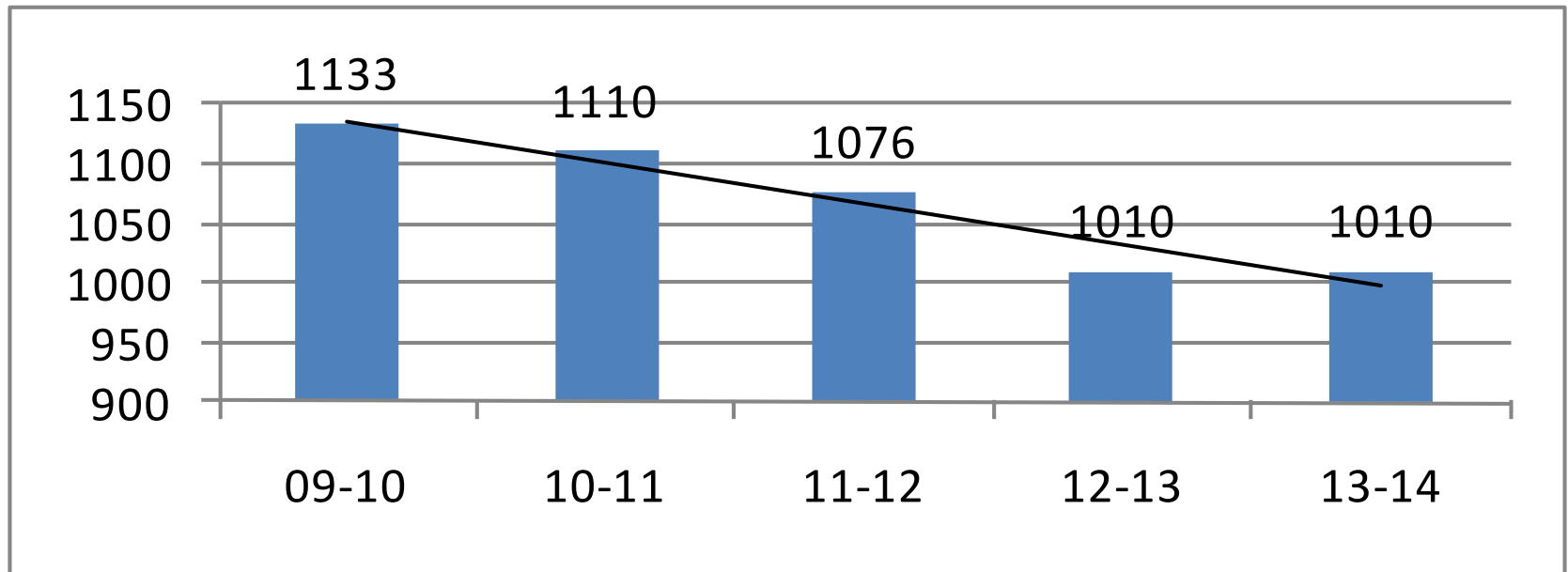
District Report 2009 - NESDEC Projected Enrollment

Projection 6 - 8

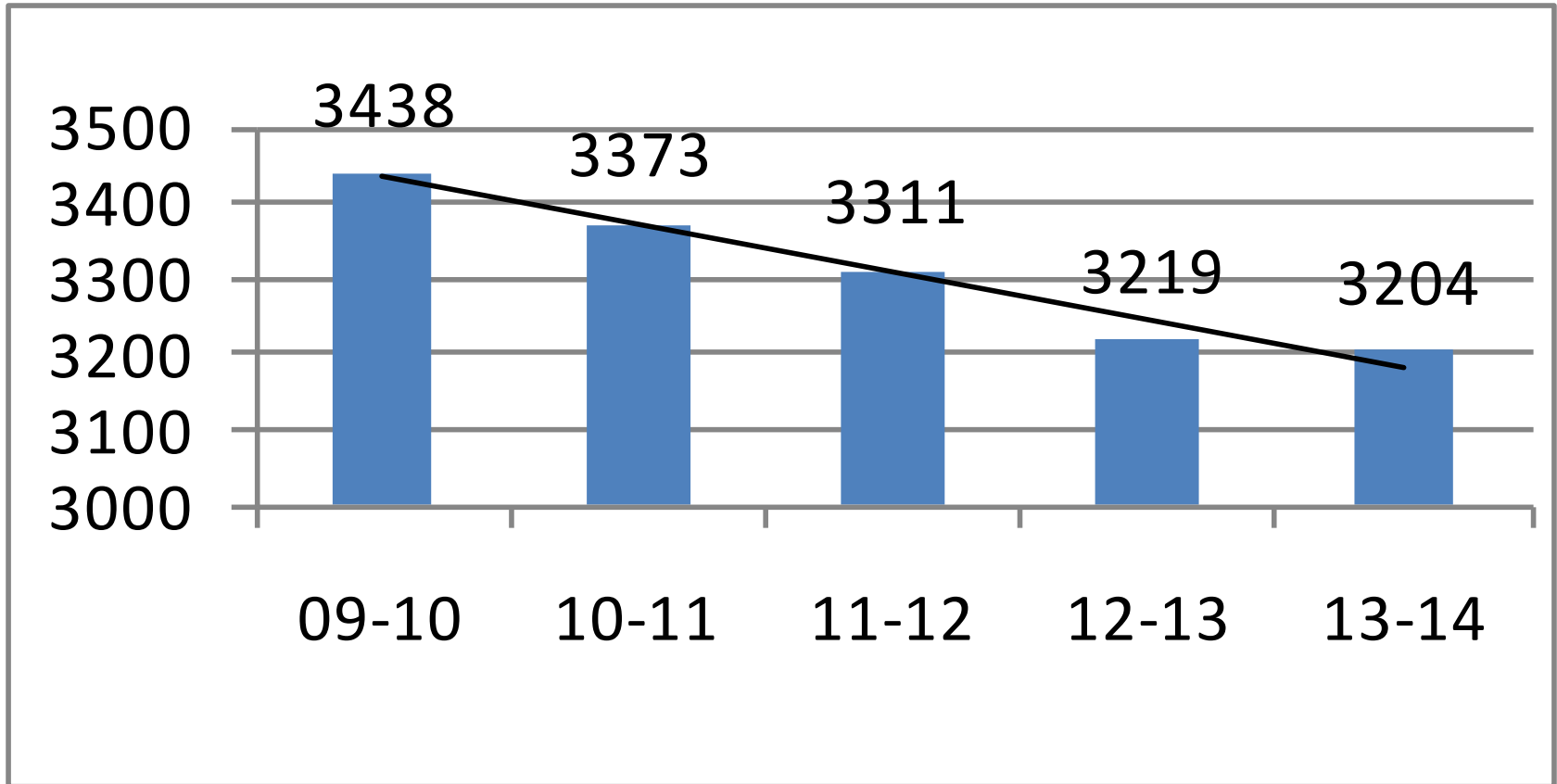


District Report 2009 - NESDEC Projected Enrollment

Projection 9 - 12



District Report 2009 - NESDEC Projected Enrollment



District Report 2008

QUESTIONS

